



Niterra

Niterra Malaysia Berhad

(Formerly known as NGK Spark Plugs Malaysia Berhad)



Brilliant ideas for a brighter future.

NGK SPARK PLUG Group has become the "Niterrra Group"



Niterra

Concept behind Niterra

Niterra is a word that we have coined that combines "niteo," which means "shine" in Latin, and "terra," which means "earth." It expresses the Group's determination to not only contribute to a sustainable society, but also brightens the entire global environment.

Becoming a shining power for the earth.

Niterra promotes efforts to create new businesses in order to achieve the business portfolio conversion in accordance with our "2040 Vision". We are focusing on the four business areas of "environment & energy," "mobility," "medical," and "communication."

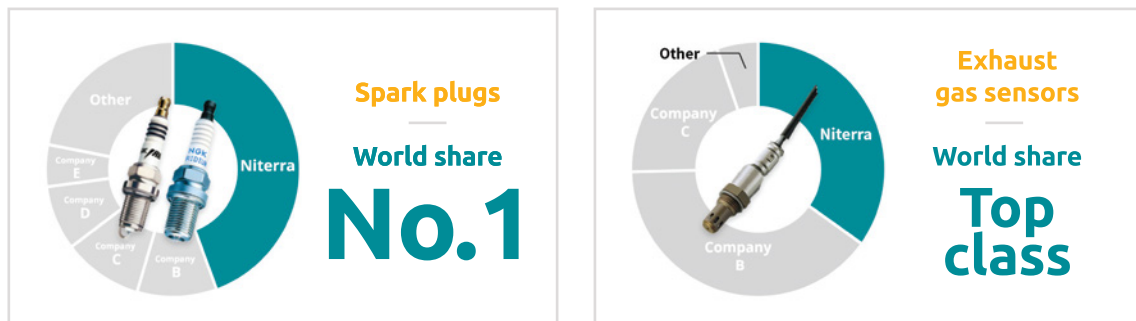


**Beyond ceramics,
eXceeding imagination.**

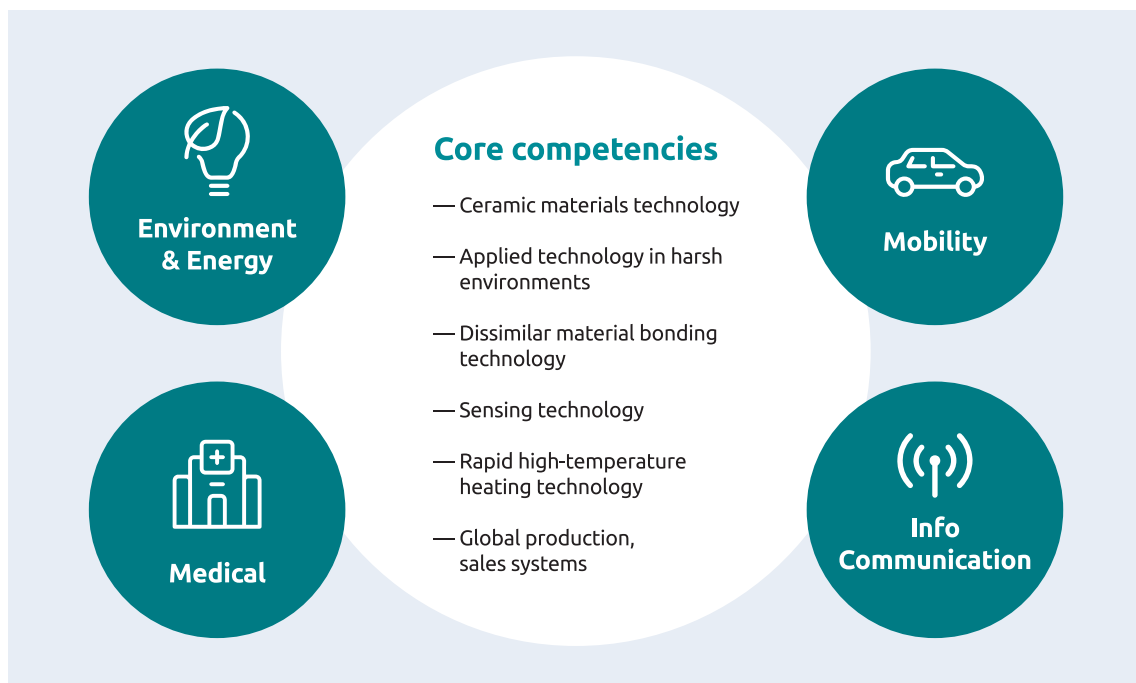
**2040 Vision —
Making changes that are not just
an extension of the past**

At Niterra, we are driven by the mission of delivering fresh value in the constantly evolving landscape of the future. In response to the profound global environmental shifts, we are embracing change as a necessity.

Our organization thrives on the collective passion of individuals who unite to confront challenges head-on, with a singular aim of enhancing society. Powered by cutting-edge technology that transcends conventional boundaries, we're venturing into uncharted territories. Beyond ceramics, our true strength lies in the advanced technological prowess we've nurtured, rooted in ceramics, and a far-reaching global network established through the sale of spark plugs. Niterra is not just a company; it's a dynamic force forging new pathways forward.



Four areas of focus for Niterra



Top Message



Since its foundation in 1936, the Niterra Group has been exploring the potential of ceramics and contributing to social development while building trust with our customers, driven by the mindset of "Participation of all employees" and "Producing quality products," which are the starting points for all our manufacturing. By doing so, we have worked to earn the trust of customers in Japan and overseas under the "NGK SPARK PLUG" company name.

However, in an era when the automotive industry is undergoing a once-in-a-century transformation, we believe that in order to achieve solutions to social issues faster than ever before, in our various initiatives we need to bring about change that is not simply an extension of the past.

As part of this effort, we have decided to change our English company name from its existing name, NGK SPARK PLUG. Our new English company name is Niterra. This is a coined word that combines the Latin words "niteo," (meaning "shine") and "terra" (meaning "earth"). It expresses the Group's desire and commitment to become a company that brightens the global environment—that truly makes the earth shine.

With technologies that transcend the realm of ceramics, our Group helps realize a better society by addressing diverse global issues. While maintaining the shared values of the "Nittoku Way" that we have cultivated over the years, each and every Niterra employee will stay mindful of our call to action— "Change with Will !!" — and will continue to seek solutions to social issues with the highest aspirations.

We sincerely appreciate your continued, generous support of the Niterra Group.

Shinichi Odo

Representative Director Chairman of the Board

A handwritten signature in black ink, appearing to read 'Shinichi Odo'.

Takeshi Kawai

Representative Director President & Chief Operating Officer

A handwritten signature in black ink, appearing to read 'Takeshi Kawai'.

Our Business Fields

We contribute to the realization of a better society in a wide range of fields such as mobility, info Communication, medical, industrial, and innovation.

Mobility

Next-generation mobility connected by ceramics

We leverage the characteristics of ceramics, with spark plugs and sensors etc., taking great pride in our top global market share, towards the creation of an environmentally friendly mobility society that enriches people's lives.



Info Communication

The future IoT society created with ceramics

We leverage the characteristics of ceramics, with spark plugs and sensors etc., taking great pride in our top global market share, towards the creation of an environmentally friendly mobility society that enriches people's lives.



Medical

Creating a healthy and prosperous society alongside patients

We are committed to improving the quality of life of people around the world with innovative products that apply our core technologies to realize a society in which people enjoy lives of good health and abundance.



Industry

Supporting global industries with ceramics

We offer optimal solutions for global industries with products that bring together our core technologies, such as piezoelectric elements using ceramics.



Innovation

Creating a future beyond imagination with technologies that transcend boundaries

We are committed to confronting global challenges and creating a future beyond current human imagination with products and services in new fields that transcend ceramics technologies.



NGK

SPARK PLUGS

NTK

TECHNICAL CERAMICS

Meet Our Iconic Brands

The manufacturing skills and spirit transcend time, giving shape to the brands people trust.



Our history, which began in 1937 with the manufacture of spark plugs, has always involved meeting the challenges of solving society's problems in response to the changing times.

Having inherited the commitment to technology and quality in manufacturing inscribed in our DNA, we will continue to rise to the challenge of creating new value and becoming a truly indispensable company through innovative manufacturing that opens up a path to the future.





NGK Spark Plugs

Our spark plugs, glow plugs and related products under the brand name "NGK" have been in long use since the establishment of the company, becoming some of the top-quality products throughout the world.

As our leading products, they have made significant contributions to the progress of the automobile industry.



4 Wheeler



ALFA ROMEO
ASTON MARTIN
AUDI
BENTLEY
BMW
CHEVROLET
CHERY ALADO
CITREON
DAIHATSU

FIAT
FORD
HONDA
HYUNDAI
NAZA / KIA
LAMBORGHINI
LOTUS
MASERATI
MAZDA

MERCEDES-BENZ
MITSUBISHI
NISSAN
OPEL
PERODUA
PEUGEOT
PORSCHÉ
PROTON
RENAULT

ROLLS ROYCE
ROVER
SSANGYONG
SUZUKI
SUBARU
TOYOTA
ISUZU
VOLKSWAGEN
VOLVO



Brand	Model	CC	Engine Model	Year	OE / Equivalent	G-Power	IX	
ALFA ROMEO	145	2000	16V TWIN SPARK	1996.2~	BKR6EKPA + PMR7A	-	BKR6EIX+	
	146	2000	16V TWIN SPARK	1996.12~	BKR6EKPA + PMR7A	-	BKR6EIX+	
	147	2000	AR 32310	2000.11~	BKR6EKPA + PMR7A	-	BKR6EIX+	
	149	1400	TURBO MULTIAIR	2010.3~	IKR9F8	-	-	
	155	2000	16V TWIN SPARK	1997.5~	BKR6EKPA + PMR7A	-	BKR6EIX+	
	156	2000	JTS 16 VALVE	2001.11~	BKR6EKPA	BKR6EGP	BKR6EIX	
	159	1900	JTS 16V	2005.7~	FR5CP	-	-	
			JTS 16V	2005.7~	FR5CP	-	-	
	164	2000	8V TWIN SPARK	1997.9~	BKP6ES	-	BCPR6EIX	
			V6 TURBO	1997.9~	BP7ES	-	BPR7EIX	
		3000	V6	-	BP5ES	BPR5EGP	BPR5EIX	
			SUPER 24V/V6Q/V6Q4	-	PFR6B	BKR6EGP	BKR6EIX	
	166	2000	V6 24V/Q4	1997.9~	PFR6B	BKR6EGP	BKR6EIX	
			16V TWIN SPARK	-	PFR6B	BKR6EGP	BKR6EIX	
	BRERA	2200	V6 TURBO	1998.11~	BP6E	BPR6EGP	BPR6EIX	
			JTS	2005.9~	FR5CP	BKR5EGP	BKR5EIX	
	GT	2000	JTS	2003.12~	BKR6EKPA	BKR6EGP	BKR6EIX	
				2003.12~2004.12	PFR6B	BKR6EGP	BKR6EIX	
	GTV	2000	16V TWIN SPARK	-	BKR6EKPA + PMR7A	-	BKR6EIX+	
			V6 12 VALVE TURBO	1997.9~	BPR7ES	-	BPR7EIX	
			V6 TURBO L	1998.6~	BP6E	BPR6EGP	BPR6EIX	
			V6 TB	-	BP7ES	-	BPR7EIX	
			JTS 16 VALVE	2003.6~	BKR6EKPA	BKR6EGP	BKR6EIX	
	MITO	1400	MULTIAIR 105 CV	2009.8~	DCPR7E-N-10	-	-	
			TURBO MULTIAIR 135CV	2009.8~	IKR9F8	-	-	
			TURBO 170CV MAIR Q.V	2009.12~	IKR9F8	-	-	
	SPIDER	3000	V6 24V	1998.6~2004	PFR6B	BKR6EGP	BKR6EIX	
ASTON MARTIN	DB7	6000	V12	1999.7~	PTR6E-13	-	-	
	DB9	6000	V12	2003.1~	PTR6D-13	-	-	
	VANQUISH	6000	V12	2006~	PTR6D-13	-	-	
	VANTAGE	5300	V8	-	BCR8ES	-	-	
	VOLANTE	5300	V8	-	BKR6E	BKR6EGP	BKR6EIX	
AUDI	A1	1400	CAX	2011.1	PZFR6R	-	-	
	A3	1400	DLA-8V	2015.11	PZKER7A8EGS	-	-	
			1600	BFQ	2002.5~2003.6	BKUR6ET-10	BKR6EGP	BKR6EIX-11
				BGU	2003.5~2005.5	BKUR6ET-10	BKR6EGP	BKR6EIX-11
		BSE, BSF		2005.6~	BKUR6ET-10	BKR6EGP	BKR6EIX-11	
		1800	AGN	1996.9~	BKUR6ET-10	BKR6EGP	BKR6EIX-11	
			APG	1999.11~2003.6	PFR6Q	BKR6EGP	BKR6EIX	
		2000	FSI (AXW, BLX, BMB)	2003.5~2004.5	PZFR5N-11T	-	-	
			FSI (BLY)	2004.6~2005.11	BKR6E	BKR6EGP	BKR6EIX	
			FSI (BLR)	2005.1~2005.11	PZFR5N-11T	-	-	
			FSI (BVY)	2005.11~	PZFR5N-11T	-	-	
	FSI (BVZ)		2005.11~	BKR6E	BKR6EGP	BKR6EIX		
	TFSI (AXX)		2004.9~2005.10	PFR6Q	BKR6EGP	BKR6EIX		
	TFSI (BWA)	2005.11~	PFR6Q	BKR6EGP	BKR6EIX			
	A4	1800	AJL	1997.8~	BKUR6ET	BKR6EGP	BKR6EIX	



Brand	Model	CC	Engine Model	Year	OE / Equivalent	G-Power	IX
AUDI	A4	1800	AFY	1995.8~1998.12	BKUR6ET	BKR6EGP	BKR6EIX
			ADR, APT, APW, ARG	1994.11~1999.4	BKUR6ET-10	BKR6EGP	BKR6EIX-11
			AWT	2000.6~2000.10	PFR6Q	BKR6EGP	BKR6EIX
			AVJ	2000.12~2002.8	PFR6Q	BKR6EGP	BKR6EIX
			AVV	2000.6~2001.9	BKUR6ET-10	BKR6EGP	BKR6EIX-11
			BFB, BEX	2002.7~	PFR6Q	BKR6EGP	BKR6EIX
			TURBO (AEB)	1994.11~	BKUR6ET	BKR6EGP	BKR6EIX
			TURBO (AJL, ANB, APU, AQC, ARQ)	1998.2~	PFR6Q	BKR6EGP	BKR6EIX
	A4	2000	ABK	1991.8~	BUR6ET	BPR6EGP	BPR6EIX
			ABT, ADW	1994.11~	BUR6ET	BPR6EGP	BPR6EIX
			ALT	2000.12~	BKUR5ET-10	BKR5EGP	BKR5EIX-11
			FSI (AWA)	2002.7~	PZFR5N-11T	-	-
			TFSI (BGB)	2004.11~2005.8	PFR6Q	BKR6EGP	BKR6EIX
			BUL, BWE	2005.6~	PFR6Q	BKR6EGP	BKR6EIX
			ABA-8KCDNA	2010.11	PFR7S8EG	-	-
			A5	2000		2007.09	PFR7S8EG
	3200			2007.9~	PFR7S8EG	-	-
	A6	1800	CYG	2015.7	PLFER7A8EG	-	-
		2000	AAE, ABK	1994.6~	BUR6ET	BPR6EGP	BPR6EIX
			ACE 16V	1994.6~	BKUR7ET	-	BKR7EIX
			ADW	1995.8~	BUR6ET	BPR6EGP	BPR6EIX
			ALT	2001.6~	BKUR5ET-10	BKR5EGP	BKR5EIX-11
		2800	ABA-4FCCES	2009.1	PFR6X-11	-	-
	3000	ABA-4FCAJA	2009.1	PFR8S8EG	-	-	
		ASN	2003.7~2005.5	BKR6EKUB	-	-	
	A8	3000	BBJ	2003.7~	BKR6EKUB	-	-
			ASN	2003.7~2005.5	BKR6EKUB	-	-
	Q3	2000		2012.5	PFR7S8EG	-	-
	Q5	2000		2013.2	PFR7S8EG	-	-
			TFSI (CDNA, CDNB, CDNC)	2008.9~	PFR7S8EG	-	-
			CAEB	2010.5~	PFR7S8EG	-	-
	Q7	3000		2010.7	PFR7S8EG	-	-
		3600	BHK	2006.8~	ILZKR7A	-	-
4200		BAR	2006.3~	PFR6W-TG	-	-	
R8	4200	BYH	2007.4~	PFR7W-TG	-	-	
	5200	BUJ	2009.4~	PFR7W-TG	-	-	
R8 SPYDER	5200		2010.1	PFR7S8EG	-	-	
RS3	2500		2015.1	SILFER8C7ES	-	-	
RS4	2700	ASJ	2000.3~2000.10	PFR7Q	-	BKR7EIX	
RS5	4200		2015.1	PFR7S8EG	-	-	
RS6	4200	BRV	2004.4~2004.9	PFR7Q	-	BKR7EIX	
RS Q3	2500		2014.11	SILFER8C7ES	-	-	
S1	2000		2014.11	PLFER7A8EG	-	-	
S3	2000	CDL	2009~	PLFER7A8EG	-	-	
S4	2700	BITURBO (AJK)	1998.7~	PFR7Q	-	BKR7EIX	
	3000		2015.1	PFR7S8EG	-	-	
	4200	BBK	2003.3~	BKR6EQUA	-	-	

Brand	Model	CC	Engine Model	Year	OE / Equivalent	G-Power	IX
AUDI	S4	4200	BHF	2006.3~	BKR6EQUA	-	-
	S6	4200	ANK	2000.9~	BKR6EQUP	-	-
		5200	BXA	2006.6~	PFR6W-TG	-	-
	S8	4200	BCS	2000.9~2001.2	BKR6EQUP	BKR6EGP	BKR6EIX-11
			BSM	2006.6~	PFR6W-TG	-	-
	TT/TTS	1800	AMK, AMU, APP, APX	1998.7~	PFR6Q	BKR6EGP	BKR6EIX
			ARY, AUG, BAM, AUM	2000.9~	PFR6Q	BKR6EGP	BKR6EIX
			BFV, BVP, BVR	2005.9~	PFR6Q	BKR6EGP	BKR6EIX
		2000	BWA	2006.8~	PFR6Q	BKR6EGP	BKR6EIX
			CDMA, CESA, CETA	2010.5~	PFR7S8EG	-	-
3200		BHE	2003.7~	IZKR7B	-	-	
BUB	2006.8~	IZKR7B	-	-			
BENTLEY	ARNAGE	6700	L410MT	2002.3	BKR4EVX	-	-
	CONTINENTAL	6000	ABA-DSDWR	2003.3	PZFR6Q-11	-	-
BMW	3 SERIES		E36 (318i, 320i, 323i, 325i)	1992~1998	BKR6EK	BKR6EGP	BKR6EIX
			E36 (328i)		BKR6EQUP	BKR6EGP	BKR6EIX
			E46 (316i, 318i, 320i, 323i, 325i, 328i, 330i)	1998~2006	BKR6EQUP	BKR6EGP	BKR6EIX-11
			E90 (318i, 320i)	2004.9~	IZFR6H11	-	-
			E90 (325i, 330i)	2005.3~	ILZFR6D11	-	-
	4 SERIES	2000	N20B20A	2014~	SILZKBR8D8S	-	-
	5 SERIES		E34 (518i, 520i, 525i, 530i)	1994.5~	BKR6EK	BKR6EGP	BKR6EIX
			E39 (520i, 523i, 525i, 528i, 530i, 535i, 540i)	1998.8~	BKR6EQUP	BKR6EGP	BKR6EIX-11
			E60 (520i, 525i, 530i, 545i)	2003.7~	BKR6EQUP	BKR6EGP	BKR6EIX-11
		2000	F32 (523i (N20B20A))	2011~	SILZKBR8D8S	-	-
	6 SERIES		E63, E64 (645Ci)	2004~	BKR6EQUP	BKR6EGP	BKR6EIX-11
	7 SERIES		E38 (728i, 735i, 740i)	1998.9~	BKR6EQUP	BKR6EGP	BKR6EIX-11
	M3	3200	E36 (S50)	1996.1~	PKR7A	-	-
			E46 (S54 B32)	2000.11~	DCPR8EKP	-	-
		4000	E90, E92, E93 (S65 B40)	2007.3~	LKR8AP	-	-
	M5	5000	E39 (S62 B50)	1998.9~2003.7	BKR6EQUP	BKR6EGP	BKR6EIX-11
			E60 (S85 B50)	2004.11~	LKR8AP	-	-
	X1	2000	N20B20A	2011~	SILZKBR8D8S	-	-
	X3	3000	E83 (M54 B25, M54 B30)	2004.1~	BKR6EQUP	BKR6EGP	BKR6EIX-11
	X5	3000	E53 (M54 B30, M62 B44)	2000~	BKR6EQUP	BKR6EGP	BKR6EIX-11
	X6	3000	E71 (N54 B30)	2008.5~	IZFR6H11	-	-
	Z3		E36, E37 (M52, M54 B22, M52, M54 B30)	1998.9~	BKR6EQUP	BKR6EGP	BKR6EIX-11
	Z4		M54 B25, M54 B30	2003.4~	BKR6EQUP	BKR6EGP	BKR6EIX-11
E85 (N46 B 20)			2004.9~	IZFR6H11	-	-	
E85 (N52 B25)			2007~	ILZFR6D11	-	-	
N20B20A			2011~	SILZKBR8D8S	-	-	
CHEVROLET	AVEO	1600	L4	2004~	PFR6L-11	-	-
	CRUZE	1800	2H0	2009.5~	IFR7X7G	-	-
	OPTRA	1600		2004~	BKR6E-11	BKR6EGP	BKR6EIX-11
		1800		2004~	BKR6EK	BKR6EGP	BKR6EIX



Brand	Model	CC	Engine Model	Year	OE / Equivalent	G-Power	IX
CHEVROLET	OPTRA 5	2000		2005~	BKR6E-11	BKR6EGP	BKR6EIX-11
CHERY ALADO	EASTAR	2400		2009~	BKR5E-11	BKR5EGP	BKR5EIX-11
	TIGGO	2000		2009~	BKR6E-11	BKR6EGP	BKR6EIX-11
CITREON	C2	1400	TU3JP	2003.8~	BKR6EZ	BKR6EGP	BKR6EIX
	C3	1600	NFU	2002~	LF5A	LF5AGP	LF5AIX-11
	C4 PICASSO	2000	NFU	2007~	LF5B	LF5AGP	LF5AIX-P
	C5	1800	16V	2002~	LF5A	LF5AGP	LF5AIX-P
		2000	16V	2002~	LF5A	LF5AGP	LF5AIX-P
	C6	3000	V6 (ES9J4S)	2010~	PLFR5A-11	-	-
	C8	2000	16V	2002~	LF5A	LF5AGP	LF5AIX-P
	XSARA	1600		1997~	BKR6EX	BKR6EGP	BKR6EIX
		1800		1997~	BKR6EX	BKR6EGP	BKR6EIX
2000			1997~	BKR6EX	BKR6EGP	BKR6EIX	
DAIHATSU	APPLAUSEA101, A102		HD-C		BKR6E-11	BKR6EGP	BKR6EIX-11
	ASCEND	1600			BKR6E-11	BKR6EGP	BKR6EIX-11
	CHARADE	1300	HC-E	1993	BKR6E-11	BKR6EGP	BKR6EIX-11
		1600	HD-E		BKR6E-11	BKR6EGP	BKR6EIX-11
	CHARADE G11		CB-22		BP5EY	BPR5EGP	BPR5EIX
	ESPRI 1000		CB202		BP5EY	BPR5EGP	BPR5EIX
Hijet	1300	HC-E		BKR6E-11	BKR6EGP	BKR6EIX-11	
FIAT	124	1400	124B	1972~1974	BP6ES	BPR6EGP	BPR6EIX
	131 MIRAFIORI	1600	131A	1974~1978	BP6ES	BPR6EGP	BPR6EIX
	COUPE	2000	V TURBO	1997~	BKR6ET	BKR6EGP	BKR6EIX
	DOBLO	1200		2000~	BKR5EZ	BKR6EGP	BKR6EIX
		1600		2000~	BKR5EZ	BKR6EGP	BKR6EIX
	MAREA	1400		1996~	BKR6EKC	BKR6EGP	BKR6EIX
		1600		1996~	BKR6EKC	BKR6EGP	BKR6EIX
		1800		1996~	BKR6EKC	BKR6EGP	BKR6EIX
		2000		1996~	BKR6EKC	BKR6EGP	BKR6EIX
	MULTIPLA	1600		2004~	BKR6EK	BKR6EGP	BKR6EIX
	PUNTO	1300		2000	BKR6E	BKR6EGP	BKR6EIX
	STILO	1600		2001~	BKR6EZ	BKR6EGP	BKR6EIX
		1800		2001~	BKR6EZ	BKR6EGP	BKR6EIX
2400			2001~	BKR6EZ	BKR6EGP	BKR6EIX	
ULYSSE	2000	16V	1997~	BKR6E	BKR6EGP	BKR6EIX	
FORD	FIESTA	1000			BPR6EFS	-	-
				2013~	SILZNR8C7H	-	-
		1400	-		BKR6E	BKR6EGP	BKR6EIX
		1600			BKR6E	BKR6EGP	BKR6EIX
	FOCUS	2000	ZETEC	1998~	PTR5A-13	-	-
	MONDEO	2000		1996~2000.9	PTR5A-13	-	-
	RANGER	2000		1998	ZFR5F-11	ZFR5FGP	ZFR5FIX-11
TELSTAR	1800	BPE5	1991~1998	BKR6E-11	BKR6EGP	BKR6EIX-11	
	2000	FS	1991~1998	BKR6E-11	BKR6EGP	BKR6EIX-11	
HONDA	ACCORD	1500	VTEC (Turbo)	2020~	DILKAR8P8SY	-	-
		1800	F18B2	1998~2002	ZFR5F-11	ZFR5FGP	ZFR5FIX-11
		2000		2001~2005	ZFR5F-11	ZFR5FGP	ZFR5FIX-11

Brand	Model	CC	Engine Model	Year	OE / Equivalent	G-Power	IX	
HONDA	ACCORD	2000	Vti	2005~2008	ZFR6K-11	-	IZFR6K-11	
			i-VTEC	2008~	IZFR6K-11NS	-	-	
			CR1	2013.7~	SILZKR7C11S	-	-	
		2400	i-VTEC	2005~2008	ZFR6K-11	-	IZFR6K-11	
			i-VTEC	2008~	ILZKR7B-11S	-	-	
				2013.7~	ILKAR7K11S	-	-	
	BRV	1500			DIFR6D13	-	-	
	CITY	1300			1997.2~1999.11	BKR6E-11	BKR6EGP	BKR6EIX-11
			i-DSI		1997.2~2003.9	BKR6E-11	BKR6EGP	BKR6EIX-11
		1500	i-VTEC		2009.7~2013.12	IZFR6K-13	-	-
			i-VTEC		2014~2020	DIFR6D13	-	-
			i-VTEC		2020~	DILZKAR7C11H	-	-
			Hybrid		2017	DILZKAR7C11S	-	-
	CIVIC	1500			1992~1995	BKR6E-11	BKR6EGP	BKR6EIX-11
			FC (Turbo)		2016	ILZKAR8H8S	-	-
			FE (Turbo)		2022~	DILKAR8P8SY	-	-
		1600			1992~1995	BKR6E-11	BKR6EGP	BKR6EIX-11
			i-VTEC		2005.9~2013.5	IZFR6K-11S	-	-
			i-VTEC		2012.5~2016.4	SILZKR7C11S	-	-
			i-VTEC (FC)		2016	SILZKR7C11S	-	-
		2000	i-VTEC (FD)		2006~2012	IZFR6K-11	-	-
			i-VTEC (FB)		2013~	SILZKR7C11S	-	-
			e:HEV (FE)		2022~	DILZKAR7G11Y	-	-
	CR-V	1500	i-VTEC (Turbo)		2017~2022	ILZKAR8J8SY	-	-
			16V		1996~2000	ZFR6F-11	ZFR6FGP	ZFR6FIX-11
		2000	i-VTEC		2001~2006	ZFR6K-11	-	IZFR6K-11
			i-VTEC		2007~	IZFR6K-11S	-	-
			i-VTEC		2013~2017	SILZKR7C11S	-	-
			i-VTEC		2017	SILZKR7C11S	-	-
	2400	i-VTEC		2016	ILZKR7B-11S	-	-	
	CR-Z	1500	i-VTEC		2010	DIFR6D13	-	-
	FREED	1500	i-VTEC		2010~	IZFR6K-13	-	-
	HRV	1500	VTEC (Turbo)		2022~	DILKAR8P8SY	-	-
		1800	R18ZF		2014~	SILZKR7C11S	-	-
	JAZZ	1300			2002.1~2007.9	BKR6E-11	BKR6EGP	BKR6EIX-11
			i-DSI		2002~	BKR6E-11	BKR6EGP	BKR6EIX-11
		1500	VTEC		2005~	IZFR6K-13	-	-
					2008~	IZFR6K-13	-	-
					2014~	DIFR6D13	-	-
			HYBRID		2014~	DILFR6J11	-	-
	ODYSSEY	2400	i-VTEC		2005~2008	IZFR6K-11	-	-
			K24A5		2008~2013	ILZKR7B-11S	-	-
K24W				2014~	ILKAR7K11S	-	-	
INSIGHT	1300	LDA3		2011	DILFR6F11G	-	-	
WR-V	1500	i-VTEC		2023~	DILZKAR7C11H	-	-	
STREAM	1700			2001~	ZFR6K-11	-	IZFR6K-11	
	1800	i-VTEC		2008~	ZFR6K-11	-	IZFR6K-11	



Brand	Model	CC	Engine Model	Year	OE / Equivalent	G-Power	IX	
HONDA	STREAM	2000		2001~	ZFR6K-11	-	-	
HYUNDAI	ACCENT	1500	DOHC	1994.4~2005.9	BKR5E-11	BKR5EGP	BKR5EIX-11	
	ATOS	1000	SOHC		BKR5E-11	BKR5EGP	BKR5EIX-11	
		1100	G4HG		BKR5E-11	BKR5EGP	BKR5EIX-11	
	COUPE	1800	DOHC	1996.4~2001.8	BKR5E-11	BKR5EGP	BKR5EIX-11	
		2000	DOHC	1996.4~2001.8	BKR5E-11	BKR5EGP	BKR5EIX-11	
	ELANTRA	1600	G4FG	2011	LZKR6B-10E	-	-	
		1800		2011	SILZKR7B11	-	-	
		2000	DOHC	2000.5~	BKR5E-11	BKR5EGP	BKR5EIX-11	
	GETZ	1300		2002.5~2005.6	BKR5E-11	BKR5EGP	BKR5EIX-11	
		1400		2002	BKR5E-11	BKR5EGP	BKR5EIX-11	
		1600	DOHC	2005.6~	BKR5E-11	BKR5EGP	BKR5EIX-11	
	i10	1000		2010~	LKR6D-10	-	-	
		1200			BKR5E-11	BKR5EGP	BKR5EIX-11	
		1300		2010~	LKR6D-10	-	-	
	i30	2000	G4FA	2007.9~	BKR5E-11	BKR5EGP	BKR5EIX-11	
	MATRIX	1500	DOHC	2001.4~	BKR5E-11	BKR5EGP	BKR5EIX-11	
		1600	DOHC	2005.5~	BKR5E-11	BKR5EGP	BKR5EIX-11	
		1800	DOHC	2001.4~	BKR5E-11	BKR5EGP	BKR5EIX-11	
	SANTA FE	2700	V6 DOHC	2005.11~	ILFR5B11	-	-	
	STAREX	2400	SOHC		BPR6ES-11	BPR6EGP	BPR6EIX	
	TUCSON	2000		2011~	LF5A-11	-	-	
		2400			LF5A-11	-	-	
	SONATA	2000	DOHC	1994.6~	BPR6ES-11	BPR6EGP	BPR6EIX-11	
			G4JP (EF)	1998~2001	BKR5E-11	BKR5EGP	BKR5EIX-11	
			G4KD (NF)	2005~2014	BKR6ES-11	BKR6EGP	BKR6EIX-11	
			YF	2012~2014	SILZKR7B11	-	-	
			G4NA (LF)	2015~	SILZKR7B11	-	-	
		2400	SOHC			BPR6ES-11	BPR6EGP	BPR6EIX-11
			G4KC (NF)	2005~2014	BKR6ES-11	BKR6EGP	BKR6EIX-11	
	VELOSTER	1600	CVVT	2011.3~	SILZKR6B10E	-	-	
VELOSTER TURBO	1600		2013~	SILZKR7B11	-	-		
KIA / NAZA	BESTARI 206	1400		2006	BKR6EK	-	-	
	CITRA	2000	G4	2002~	BKR6E-11	BKR6EGP	BKR6EIX-11	
	CARENS			2004.8~	BKR5ES-11	BKR5EGP	BKR5EIX-11	
	CARNIVAL	2500	KV6	2000~2006	PFR6G-11	-	-	
	CERATO	1600	G4FC		LZKR6B-10E	-	-	
		2000	G4KD		SILZKR7B11	-	-	
	FORTE	1600	G4FC	2010~	LZKR6B-10E	-	-	
		2000	G4KD	2010~	LF5A-11	LF5AGP	LF5AIX-11	
	K5	2000	NU HEV	2011.5~	SILZKR6B11	-	-	
	OPTIMA	2000		2003~	BKR6ES-11	BPR6EGP	BKR6EIX-11	
				2010~	SILZKR7B11	-	-	
	PICANTO	1100		2004.1~2011	BKR5E-11	BKR5EGP	BKR5EIX-11	
		1250		2011~	LKR6D-10E	-	-	
	RIA	2500		2001~2006	PFR6N-11	-	BKR6EIX-11	

Brand	Model	CC	Engine Model	Year	OE / Equivalent	G-Power	IX
KIA / NAZA	RIO	1400		2005.6~	BPR5ES-11	BPR5EGP	BPR5EIX-11
	SEPHIA	1500	B5	1996~1997	BKR6E-11	BKR6EGP	BKR6EIX-11
	SPECTRA	1600	DOHC	2003.10~	BKR5E-11	BKR5EGP	BKR5EIX-11
	SPORTAGE	2000	DOHC 16V	1992.8~1997.10	BKR6E-11	BKR6EGP	BKR6EIX-11
				2004~	BKR5E-11	BKR5EGP	BKR5EIX-11
				2010~	SILZKR7B11	-	-
	SURIA				BKR5E	BKR5EGP	BKR5EIX
SUTERA	1100		2005~2011	DCPR7E	DCPR7EGP	DCPR7EIX	
LAMBORGHINI	GALLARDO COUPE / SPIDER / COUPE SUPERLGGERA	5000		2005.5~	PFR7G	-	BKR7EIX
	MURCIELAGO COUPE / LP640 COUPE / ROADSTER	6500	L522	2007~	KT8BI	-	-
LOTUS	ELISE	1800	18K4K	1999~	PFR6N-11	BKR6EGP	BKR6EIX-11
	EUROPA SPECIAL		TWIN CAM, S2, S1		BP7ES	-	BPR7EIX
MASERATI	3200 GT				PMR8A	-	-
	COUPE GT	4200		2002.6~2003.11	PMR8A	-	-
				2003.11~	PMR8B	-	-
	QUANTTOPORTE	3200	V8 EVOLUZIONE	1992.2~2002	PMR8A	-	-
			-	2002.11~2003.11	PMR8A	-	-
			-	2003.12~	PMR8B	-	-
	GRAN TOURISMO	4200		2007.1	PMR8B	-	-
	GRAN SPORT	4200		2004.9	PMR8B	-	-
SPYDER GT	4200	-	2001.10~2003.11	PMR8A	-	-	
		-	2003.12~	PMR8B	-	-	
MAXUS	G10				ILZKAR8G8	-	-
MAZDA	323 / ASTINA	1600	B6-D	1991~	BKR6E-11	BKR6EGP	BKR6EIX-11
	626	2000	FS	1992~1997	BKR5E-11	BKR5EGP	BKR5EIX-11
	2	1500	ZY-VE	2009.6~	BKR5E-11	BKR5EGP	BKR5EIX-11
				2010~	IFR5E11	-	-
			DJ	2014	ILKAR7L11	-	-
	3	1600		2003~	BKR5E-11	BKR5EGP	BKR5EIX-11
				2009.6~	IFR5E11	-	-
			BM	2014	ILKAR7L11	-	-
	6	2000		2010~	ILTR5A-13G	-	-
			GJ	2012	ILKAR7L11	-	-
			GJ	2012	ILKAR7L11	-	-
	8	2300		2010~	ILTR5A-13G	-	-
	CX-3	2000		2015	ILKAR7L11	-	-
	CX-5	2000	PE-VPS	2012.2~2012.7	DILKAR7F8	-	-
			PE-VPS	2012.8~	ILKAR7L11	-	-
	CX-7	2300	L3-VDT	2006.12~2009.9	ILTR6A-8G	-	-
			L3-VDT	2009.9~	SILTR6A7G	-	-
LANTIS	1600	Z6D		BKR5E-11	BKR5EGP	BKR5EIX-11	
PREMACY	1800	FP-DE	1999~	BKR5E-11	BKR5EGP	BKR5EIX-11	
RX-8	1300	13B-MSP	2003.4~	RE7C-L	-	-	



4 Wheeler | K - M

Brand	Model	CC	Engine Model	Year	OE / Equivalent	G-Power	IX
MAZDA	RX-8	1300	13B-MSP	2003.4~	RE9B-T	-	-
MERCEDES-BENZ	220	2200	111.960	1992~1993	BKR6E-11	BKR6EGP	BKR6EIX-11
	280 (W124)	2800	104.942	1992~1993	BKR5E	BKR5EGP	BKR5EIX
	AMG C43(202)	4300	M113	1997.9~	PFR5R-11	BKR5EGP	BKR5EIX-11
	AMG C63	6300	M156	2007.8~	ILZKAR7A10	-	-
	AMG CL55	5500	M113	2000~	PFR5R-11	BKR5EGP	BKR5EIX-11
	AMG CL63	6300	M156	2006.9~	ILZKAR7A10	-	-
	AMG CLK55	5400	M113 TWIN SPARK	2002~	IFR6D10	-	-
	AMG CLK63	6300	M156	2006~	ILZKAR7A10	-	-
	AMG CLS55(219)	5500	M113 TWIN SPARK	2005.1~	ILFR6A	-	-
	AMG CLS63(219)	5500	M156	2006.5~	ILZKAR7A10	-	-
	AMG E55(210)	5500	M113	1997.9~	PFR5R-11	BKR5EGP	BKR5EIX-11
	AMG E63(211, 212)	6300	M156	2006.5~	ILZKAR7A10	-	-
	AMG S55	5500	M113 TWIN SPARK	2002~	ILFR6A	-	-
	AMG S65(220, 221)	6000	M275 TWIN SPARK	2003~	IFR6Q-G	BKR6EGP	BKR6EIX
	AMG SL55(230)	5500	M113	2000~	PFR5R-11	-	-
			TWIN SPARK	2002.6~	ILFR6A	-	-
	AMG SL63(230)	6200	M156	2008.3~	ILZKAR7A10	-	-
	AMG SL65(230)	6000	M275 TWIN SPARK	2004~	IFR6Q-G	BKR6EGP	BKR6EIX
	AMG SLK55(171)	5500	M113 TWIN SPARK	2004.4~	IFR6D10	BKR6EGP	BKR6EIX-11
	A160(168)	1600	M166	1997.10~	BKUR6ET-10	BKR6EGP	BKR6EIX-11
	A170(169)	1700	M266	2004.9~	BKR6EZB	BKR6EGP	BKR6EIX
	A190(168)	1900	M166	1998~	BKUR5ET	BKR5EGP	BKR5EIX
	A200(168)	2000	M266	1998~	BKR6EZB	BKR6EGP	BKR6EIX
	B170(245)	1700	M266	2005.4~	BKR6EZB	BKR6EGP	BKR6EIX
	B200(245)	2000	M266	2005.4~	BKR6EZB	BKR6EGP	BKR6EIX
	C180(W203)	1800		2001~	BKUR5ETZ-10	-	-
	C200	1800	M111	1998~	BKUR5ETZ-10	-	-
	C200(W203)	2000	M111.955	2000~2002	IFR6D10	-	-
	C200(W205)	2000	274.92	2014~2018	SILZKFR8E7S	-	-
	C220(202)	2200	M111		BK6E	BKR6EGP	BKR6EIX
	C230(202)	2300	M111	1996.9~	BK5E	BKR5EGP	BKR5EIX
	C230(203)	2300	M272	2004.12~	PLKR7A	-	-
	C240(203)	2400	M112	2000~	PFR5R-11	BKR5EGP	BKR5EIX-11
	C280(202)	2800	P00P	1993.6~	BK6E	BKR6EGP	BKR6EIX
			M112	1997.6~	PFR5G-11	-	-
	C320(203)	3200	M112	2000.5~	PFR5R-11	BKR5EGP	BKR5EIX-11
	CLK200	2000	M111	1997.6~	BK5E	BKR5EGP	BKR5EIX
			271	2003.2~	ILFR6A	-	-
	CLK320(208)	3200	V6 M112	1997.6~	PFR5G-11	-	-
			M112 TWIN SPARK	2003.3~	PFR5R-11	BKR5EGP	BKR5EIX-11
E200	2000	M111	1998~	BKUR5ETZ-10	-	-	
E230 (W210)	2300	M111	1998~	BKUR5ETZ-10	-	-	
E240(210)		M112	2000.6~	PFR5R-11	BKR5EGP	BKR5EIX-11	
E250(W212)		M271	2009~	PLKR7B8E	-	-	
E280(210)	2800	104.945	1995~1997	BK5E	BKR5EGP	BKR5EIX	
E280(210)	2800	112.921 (TWIN SPARK)	1997~2002	PFR5G-11	-	-	

Brand	Model	CC	Engine Model	Year	OE / Equivalent	G-Power	IX	
MERCEDES-BENZ	E280(211)	3000	M272	2006.1~	PLKR7A	-	-	
	E320(210)	3200	M111	1995.6~	BK5E	BKR5EGP	BKR5EIX	
			M112		PFR5G-11	-	-	
	E350(211)	3500	M272	2004.11~	PLKR7A	-	-	
	S280	2800	M111	1998~	BKUR5ETZ-10	-	-	
	S280(W221)	3000	272.946	2006~2013	PLKR7A	-	-	
	S280(W220)	2800	112.922	1999~2005	PFR5R-11	-	-	
	S320L	3200	M111	1998~	BKUR5ETZ-10	-	-	
	SLK200	1800	M271	2004.4~	ILFR6A	-	-	
	SLK230(170)	2300	M111	2000.3~	IFR6D10	-	-	
SLK320(170)	3200	M112	2000.3~	PFR5R-11	BKR5EGP	BKR5EIX-11		
MITSUBISHI	AIRTREK	2000		2001	BKR6E-11	BKR6EGP	BKR6EIX-11	
				2002	PGR6A	-	-	
	ASX	1600	GA1W (4A92)	2010.6~	DILFR5A11	-	-	
		2000	GA2W (4B11)	2010.6~	FR6EI	-	BKR6EIX-11	
	ATTRAGE	1200	3A92	2013.3~	LZFR5B1-11	-	-	
	COLT	1500	4A91	2003	ILZFR6C-11K	-	-	
		1600	4G92	1996~	BKR6E-11	BKR6EGP	BKR6EIX-11	
	GALANT	1800	4G93	1992~	BKR5E-11	BKR5EGP	BKR5EIX-11	
		2000	4G63	1980~	BKR6E-11	BKR6EGP	BKR6EIX-11	
			4G94	2003~2013	BKR5EKUD	-	-	
			6A12	1992~1996	PFR6J-11	-	BKR6EIX-11	
	GRANDIS	2400	4G69	2004.8~	LZFR6AI	-	-	
	LANCER	1600	4G92	1992~	BKR6E-11	BKR6EGP	BKR6EIX-11	
			4G92 MIVEC	1996~	BKR7EKC-N-11	-	BKR7EIX-11	
		1800		2010~	FR6EI	-	BKR6EIX-11	
		2000		2010~	FR6EI	-	BKR6EIX-11	
	LANCER EVO IV, V, VI			2004~	PGR7A	-	BPR7EIX	
	LANCER EVO VI		TOMMI MAKINEN EDITION		IGR7A	-	-	
	LANCER EVO X					ILKR8E6	-	-
					4B11 TURBO	2010~	DILKR8B6	-
	MIRAGE	1000		3A90	2012.8	DILFR5A11	-	-
				3A90	2015.11	DILFR5L11	-	-
		1200	3A92	2012. 2015	LZFR5B1-11	-	-	
		1300	4G13	1995.10~2002.8	BPR5ES-11	BPR5EGP	BPR5EIX-11	
		1600	4G92(MIVEC)	1995.10~2002.8	BKR7EKC-N-11	-	BPR7EIX-11	
	OUTLANDER	2000	4B11	2012.1	DIFR5E11	-	-	
		2400	4G69	2003.10~2006.12	LZFR6AI	-	-	
			4B12	2007.6~	FR5EI	-	BKR5EIX-11	
	PAJERO	2400		1996~2000	BKR5E-11	BKR5EGP	BKR5EIX-11	
		3000	6G72	2009.12	DIFR6C11	-	-	
3800		6G75	2006~	BKR5E-11	BKR5EGP	BKR5EIX-11		
STORM	3000	V6	2001~	PFR6J-11	-	BKR6EIX-11		
TREDIA	1600	4G32	1984~1987	BP6ES-11	-	BPR6EIX-11		
AD	1600	GA16DS	1990~1999	BKR5E-11	BKR5EGP	BKR5EIX-11		
Xpander	1500	4A91	2020	LZFR5B1-11	-	-		
NISSAN	ALMERA	1000	1.0 Turbo		ILKAR7Q7	-	-	



Brand	Model	CC	Engine Model	Year	OE / Equivalent	G-Power	IX
NISSAN	ALMERA	1500		2012~	LZKAR6AP-11	-	-
	ALTIMA	2000		2000~	BCPR6ES	-	BCPR6EIX-11
	CEFIRO	2000i	24V (A32)	1997~2001	PFR6G-11	-	BKR6EIX-11
			V6 24V (A33)	2001~	PFR6G-11	-	BKR6EIX-11
		3000i		1994~1998	PFR6G-11	-	BKR6EIX-11
			V6 24V	1998~2001	PFR6G-11	-	BKR6EIX-11
	FAIRLADY 350Z		VQ35DE	2003~	PLFR5A-11	-	LF5AIX-11
	FRONTIER	2400	KA24DE	1997~2004	BKR5E-11	BKR5EGP	BKR5EIX-11
	GRAND LIVINA	1600		2007~	LZKAR6AP-11	-	-
		1800		2007~	LZKAR6AP-11	-	-
	GT-R R35		VR38DETT	2007~	DILKAR8A8	-	-
	LIVINA X-GEAR	1600		2011~	LZKAR6AP-11	-	-
	LANGLEY	1300	E13	1983~1986	BP5EY	BPR5EGP	BPR5EIX
	LATIO	1600		2007~	LZKAR6AP-11	-	-
		1800		2007~	LZKAR6AP-11	-	-
	MARCH	1000		2000~	BP5EY	BPR5EGP	BPR5EIX
		1400		2004~	PLFR6A-11	-	LF6AIX-11
	MURANO	2500	QR25DE	2004~2008	LF5A-11	LF5AGP	LF5AIX-11
				2008.9	DILKAR6A11	-	-
	NV200	1500		2016.12	DILKAR6A11	-	-
		1600	HR16DE	2016.12	LZKAR6AP-11	-	-
	SENTRA	1500	B15/ QG15DE	1995~2000	BKR5E	BKR5EGP	BKR5EIX
			GA16DE		BKR5E-11	BKR5EGP	BKR5EIX-11
			QG15DE		BKR5E	BKR5EGP	BKR5EIX
			QG16DE	2001~	BKR5E	BKR5EGP	BKR5EIX
		QD18DE	2001~	BKR5E	BKR5EGP	BKR5EIX	
		1800	QG18DE	2000~	BKR5E-11	BKR5EGP	BKR5EIX
	SERENA	1600		1992~2001	BKR5E-11	BKR5EGP	BKR5EIX-11
		2000	SR20DE	1992~2001	BKR5E-11	BKR5EGP	BKR5EIX-11
		2000	MR20DD (C26)	2010~	DILKAR7D11H	-	-
	SUNNY		B11		BP5ES	BPR5EGP	BPR5EIX
	SILVIA	2000	S14	1996.6	PFR6B-9	-	-
			S15(SR20DE)	1999.1	BKR6EY	BKR6EGP	BKR6EIX-11
	SKYLINE GTR	2500	R34 (RB26DETT)	2001~	PFR6A-11	-	BCPR6EIX-11
	SYLPHY	2000		2008~	LZKAR6AP-11	-	-
	TEANA	2000		2011~	LZKAR6AP-11	-	-
			MR20DE	2013	PLZKAR6A-11D	-	-
		2500	V6	2011~	DF6H-11B	-	-
	PULSAR	1600	GA16	1987~1988	BKR5E-11	BKR5EGP	BKR5EIX-11
	URVAN	2000	KA20DE	2000~2002	BKR5E-11	BKR5EGP	BKR5EIX-11
VANETTE	1600	GA16DE	1994~2001	BKR5E-11	BKR5EGP	BKR5EIX-11	
	2000	SR20DE	1992~1999	BKR5EY	BKR5EGP	BKR5EIX	
		Z20S	1988~1999	BPR5ES-11	-	BPR5EIX-11	
X-TRAIL	2000		2001~	LF5A-11	LF5AGP	LF5AIX-11	
	2000	T32	2014~	DILKAR7D11H	-	-	
	2500	T32	2014~	DILFR6A11	-	-	

Brand	Model	CC	Engine Model	Year	OE / Equivalent	G-Power	IX
NISSAN	X-TRAIL	2500		2001~	LF5A-11	LF5AGP	LF5AIX-11
OPEL	ASTRA	1600	X16	1996.9~1998.1	BKR5EK	BKR5EGP	BKR5EIX
			X16	1998.11~2000.11	BKR5EK	BKR5EGP	BKR5EIX
			Z16	2000.11~2004.5	BKR5EK	BKR5EGP	BKR5EIX
			Z16	2004.5~	BKR5EK	BKR5EGP	BKR5EIX
	CALIBRA	2000	C20LET	1994.3~	BCPR6ET	BKR6EGP	BKR6EIX
			X20XE	1994.1~	BKR5EK	BKR5EGP	BKR5EIX
	KADETT	1000	10N, 10S	1962~1965	BP6ES	BPR6EGP	BPR6EIX
	REKORD	1800	18S	1982~1986	BP6HS	-	BPR6HIX
	VECTRA	1800	X18XE	1996.2~1999.11	BKR5EK	BKR5EGP	BKR5EIX
			X18XE	1999.11~2001.3	BKR5EK	BKR5EGP	BKR5EIX
			Z18	2001.3~	BKR5EK	BKR5EGP	BKR5EIX
		2000	X20XE	1996.2~1999.11	BKR5EK	BKR5EGP	BKR5EIX
X20XE	1999.11~		BKR5EK	BKR5EGP	BKR5EIX		
ZAFIRA	1800	X181	2000.2~2000.11	BKR5EK	BKR5EGP	BKR5EIX	
		Z18	2000.11~	BKR5EK	BKR5EGP	BKR5EIX	
PERODUA	ALZA	1500	3SZ-VE	2010.1~2022	DCPR7EA-9	DCPR7EGP	DCPR7EIX
			2NR-VE	2022~	ILKAR6B11	LKAR6AGP	LKAR6AIX-11
	ARUZ	1500	2NR-VE	2019~	ILKAR6B11	LKAR6AGP	LKAR6AIX-11
	AXIA	1000	1KR-DE2	2014~Present	LKR6C	LKR6AGP	LKR6AIX
	ATIVA	1000		2021~	SILKAR7G8G	-	-
	BEZZA	1000	1KR-DE2	2016	LKR6C	LKR6AGP	LKR6AIX
		1300	1NR-VE	2016	ILKAR6B11	LKAR6AGP	LKAR6AIX-11
	KEMBARA	1300	HCEJ	1998~2003	BKUR6EK	BKR6EGP	BKR6EIX-11
			K3VE	2003~	BKR6EY	BKR6EGP	BKR6EIX-11
	KANCIL	660	EFSE	1998.10~2003.2	BP5ES	BPR5EGP	BPR5EIX
			EFCL	2003.3~2009.7	BP5ES	BPR5EGP	BPR5EIX
		800	ED10C	1994.8~2008.7	BP6EY	BPR6EGP	BPR6EIX
	KELISA	800	ED-DE	2002.1~2009.7	BP6EY	-	BPR6EIX
			ED-DE	2001.8~2007.6	BKR5E-11	BKR5EGP	BKR5EIX-11
	KELISA	1000	EJ-DE	2004.5~2007.6	BKR5E-11	BKR5EGP	BKR5EIX-11
		1000	EJ-DE	2000.10~2009.12	BKR5E-11	BKR5EGP	BKR5EIX-11
	MYVI	1000	EJ-VE	2005.5~2011.6	BKR5E-11	BKR5EGP	BKR5EIX-11
			EJ-VE	2006.1~2013.6	BKR5E-11	BKR5EGP	BKR5EIX-11
		1300	K3-VE	2005. 2006	BKR6E-11	BKR6EGP	BKR6EIX-11
			K3-VE	2007. 2015	DCPR7EA-9	DCPR7EGP	DCPR7EIX
		1500	1NR-VE	2018	ILKAR6B11	LKAR6AGP	LKAR6AIX-11
			3SZ-VE	2011.2015	DCPR7EA-9	DCPR7EGP	DCPR7EIX
	VIVA	1000	2NR-VE	2018	ILKAR6B11	LKAR6AGP	LKAR6AIX-11
		850	EJ-VE	2007.7~	BKR5E-11	BKR5EGP	BKR5EIX-11
		850	ED-VE	2007.7~	BKR5E-11	BKR5EGP	BKR5EIX-11
	RUSA	660	EF-VE	2007.7~	BKR5E-11	BKR5EGP	BKR5EIX-11
		1300	HC	1998~2006	BK6E	BKR6EGP	BKR6EIX
1300		HDC	1998~2006	BK6E	BKR6EGP	BKR6EIX	
PEUGEOT	206	1400	HDE	1998~2006	BK6E	BKR6EGP	BKR6EIX
		1400	TU3JP	1998.11~	BKR6EK	BKR6EGP	BKR6EIX
		1600	TU5JP	1998.11~	BKR6EK	BKR6EGP	BKR6EIX



Brand	Model	CC	Engine Model	Year	OE / Equivalent	G-Power	IX
PEUGEOT	208	1600	EP6C	2013~	PLZKBR7B8DG	-	-
	306	1800		1997~2003	BKR5EK	BKR5EGP	BKR5EIX
	307	1600		1993~2003	BKR6EK	BKR6EGP	BKR6EIX
	308	1200		2014.11	LZKR6AI-10G	-	-
	308 TURBO	1600			PLZKBR7B8DG	-	-
	406	2000	XU7.JP	1996~	BKR5EK	BKR5EGP	BKR5EIX
	407	2000		2004.2~	LF5AIX-11	-	-
	508	1600		2011.7	PLZKBR7B8DG	-	-
	3008	1600	EP6, EP6DT	2009.5~	PLZKBR7A-G	-	-
	5008	1600	EP6	2009.11~	PLZKBR7A-G	-	-
	RCZ	1600	EP6CDTX	2009.11~	ILZKBR7A-8G	-	-
PORSCHE	911	3800		1995.8~	BKR6EK	BKR6EGP	BKR6EIX
	911 CARRERA/S (996, 997)	3600		2001~	BKR7EQUP	-	BKR7EIX-11
	911 TURBO	3600	-	1993.3~	BKR6EK	BKR6EGP	BKR6EIX
	911 TURBO(996)	3600	M96.70	2001~2006	BCPR7ET	-	-
	BOXTER (986)	2700	M96.22, M96.23	2002.7~	BKR6EQUP	BKR6EGP	BKR6EIX-11
	BOXTER (987)	2700	M96.25	2004.12~	BKR7EQUP	-	BKR7EIX-11
	CAYENNE (955)	3200	M02.2Y BFD	2003.10~	IZKR7B	-	-
	CAYENNE S (955)	4500	M48.00	2002.10~	BKR6EQUP	BKR6EGP	BKR6EIX-11
	CAYENNE TURBO (955)	4500	M48.50	2002.10~	PFR7Q	-	-
	CAYMAN	2700	M97.20	2006.9~	BKR7EQUP	-	BKR7EIX-11
PROTON	ARENA	1500	4G15M	1999~	BP5ES-11	BPR5EGP	BPR5EIX-11
	EXORA	1600	S4P16 (Non-Turbo)	2009.4~	BPR6EF-11	TR6GP	TR6IX
			CFE		ILKAR7G7	-	-
	ERTIGA	1400	K14B	2016	LKR6F-10	-	-
	GEN 2	1300	A490	2003.12~	BPR6EF-11	TR6GP	TR6IX
		1600	S4P16	2003.12~	BPR6EF-11	TR6GP	TR6IX
	PERSONA	1600	S4P16	2007~2016	BPR6EF-11	TR6GP	TR6IX
			S4PH	2016~	LKAR7C-9	LKAR7BGP	-
	INSPIRA	1800	4B10	2011~	FR6EI	-	BKR6EIX
		2000	4B11	2011~	FR6EI	-	BKR6EIX
	IRIZ	1300	S4PE	2014.9~	LKAR7C-9	LKAR7BGP	-
		1600	S4PH	2014.9~	LKAR7C-9	LKAR7BGP	-
	ISWARA	1300	4G13P	1991.10~1993.9	BP5ES	BPR5EGP	BPR5EIX
			4G13M	1992.10~1996.6	BP5ES	BPR5EGP	BPR5EIX
		1500	4G15P	1991.1~1993.9	BP5ES	BPR5EGP	BPR5EIX
			4G15M	1995.11~2002.12	BP5ES	BPR5EGP	BPR5EIX
	PERDANA	2000	4G63S	1995.10~1999.8	BKR6E-11	BKR6EGP	BKR6EIX-11
			6A12DOHC (V6)	1999.9~2013.5	PFR6J-11	BKR6EGP	BKR6EIX-11
			R20A3	2013~	IZFR6K-11NS	-	-
		2400	K24Z2	2013~	ILZKR7B-11S	-	-
PREVE	1600	S4PH	2009~	BPR6EF-11	TR6GP	TR6IX	
		CFE	2012~	ILKAR7G7	-	-	
PUTRA	1800	4G93DOHC	1995.3~2000.12	BK5E	BKR5EGP	BKR5EIX	
SAGA	1300	4G13	1985.4~1991.6	BP5ES	BPR5EGP	BPR5EIX	

Brand	Model	CC	Engine Model	Year	OE / Equivalent	G-Power	IX	
PROTON	SAGA	1300	4G13M	1992.8~2007.12	BP5ES	BPR5EGP	BPR5EIX	
			S4PE	2008.1~2014.11	BPR6EF-11	TR6GP	TR6IX	
			NFE (VVT)	2016	LKAR7C-9	LKAR7BGP	-	
		1500	G15B	1985.4~1991.6	BP5ES	BPR5EGP	BPR5EIX	
			4G15M	1991.01~1996.6	BP5ES	BPR5EGP	BPR5EIX	
				2007~	BPR6EF-11	TR6GP	TR6IX	
	1600	4G92	1988~1996	BK5E	BKR5EGP	BKR5EIX		
		S4PH	2006~	BPR6EF-11	TR6GP	TR6IX		
	SATRIA	1300	4G13M		1997.7~2000.7	BP5ES	BPR5EGP	BPR5EIX
					2000.8~2006.5	BP5ES	BPR5EGP	BPR5EIX
				S4PE (SATRIA NEO)	2007~2008	BPR6EF-11	TR6GP	TR6IX
		1500	4G15M	1996~2006	BP5ES	BPR5EGP	BPR5EIX	
		1600	4G92	1997.7~2000.7	BK5E	BKR5EGP	BKR5EIX	
			S4PH (SATRIA NEO)	2006~	BPR6EF-11	TR6GP	TR6IX	
	1800	4G93DOHC	1998~2006	BKR6E-11	BKR6EGP	BKR6EIX-11		
	SAVVY	1200	D4F-L4	2005.5~2011.3	LZKAR7A	-	-	
	SUPRIMA	1600	CFE	2011~	ILKAR7G7	-	-	
	WAJA	1600	4G18	1999~2006	BKR6E-11	BKR6EGP	BKR6EIX-11	
			S4PH	2006~	BPR6EF-11	TR6GP	TR6IX	
		1800	F4P76D	2001~	BK6E-11	BKR6EGP	BKR6EIX-11	
	WIRA	1300	4G13P	2005.10~2006.12	BP5ES-11	BPR5EGP	BPR5EIX-11	
		1500	4G15	2005.10~2006.12	BP5ES-11	BPR5EGP	BPR5EIX-11	
		1600	4G92(Persona)	1995.12~2005.9	BK5E	BKR5EGP	BKR5EIX	
			4G92P	2000.8~2002.2	BK6E-11	BKR6EGP	BKR6EIX-11	
	1800	4G93DOHC	2000.8~2001.12	BK6E-11	BKR6EGP	BKR6EIX-11		
	X50	1500	1.5 TGDI	2020	ILKFR8B7G	-	-	
	X70	1800	1.8 TGDI (JLE-4G18TDB)	2019~	IFR7X8G	-	-	
		1500	1.5 TGDI	2022~	ILKFR8B7G	-	-	
	Juara	1100	3G88	2001~2003	DCPR7E	DCPR7EGP	DCPR7EIX	
	Tiara	1100	TU1M	1996~2000	BK5E	BKR5EGP	BKR5EIX	
RENAULT	CLIO	1400			BK5E	BKR5EGP	BKR5EIX	
	KANGOO	1600	K7M	2001~	BKR5EK	BKR5EGP	BKR5EIX	
	LAGUNA	1800	16V	1998.5~	BKR5EK	BKR5EGP	BKR5EIX	
		2000	16V	1998.5~	BKR5EK	BKR5EGP	BKR5EIX	
	MEGANE	1600		1999.3~	BKR5EK	BKR5EGP	BKR5EIX	
				2003~	BKR6EZ	BKR6EGP	BKR6EIX	
		2000	16V			BKR6EK	BKR6EGP	BKR6EIX
							BKR6EZ	BKR6EGP
		F4R	2014	PFR7Z-TG	-	-		
SCENIC	2000	16V	2006~	BKR6E	BKR6EGP	BKR6EIX		
ROLLS ROYCE	PARK WARD	5400	V12 BMW	2000.10~	BKR6EQUP	BKR6EGP	BKR6EIX-11	
	PHAMTOM	6800		2012.3	IFR6AE11S	-	-	
	PHAMTOM COUPE	6700		2008	BKR6EQUP	-	-	
	PHAMTOM	6700		2007.5	BKR6EQUP	-	-	
	DROPHEAD COUPE							
	SILVER SERAPH	5400	-			BKR6EQUP	BKR6EGP	BKR6EIX-11



Brand	Model	CC	Engine Model	Year	OE / Equivalent	G-Power	IX		
ROVER	ROVER 75	1800	K-SERIES	1998~	PFR6N-11	-	-		
		2000	KB6	1998~	PFR6N-11	-	-		
		2500	KV6	1998~	PFR6N-11	-	-		
SSANGYONG	CHAIRMAN	2300	DOHC	1997.10~	BKR5E-11	BKR5EGP	BKR5EIX-11		
		2800	DOHC	1997.10~2003.7	BKR5E-11	BKR5EGP	BKR5EIX-11		
			DOHC	2003.8~	BKUR5ETZ-10	-	-		
		3200	DOHC	1997.10~2003.7	BKR5E-11	BKR5EGP	BKR5EIX-11		
	DOHC		2003.8~	BKUR5ETZ-10	-	-			
REXTON RX 320S				BK6E-11	-	-			
SUZUKI	ALTO	1000		2011~	BPR5E	BPR5EGP	BPR5EIX		
	KIZASHI	2400		2009	SILFR6A11	-	-		
	CARRY	1300	G13	2000~2004	BKR6E-11	BKR6EGP	BKR6EIX-11		
	ERTIGA	1400	K14B		KR6A-10	-	-		
	SWIFT	1400	K14B	2013~	KR6A-10	-	-		
		1500	M15A	2004~	BKR6E-11	BKR6EGP	BKR6EIX-11		
		1600	M16A	2010~	BKR6E-11	BKR6EGP	BKR6EIX-11		
		1600	K14B	2013~	KR6A-10	-	-		
	SX4	1600		2012~	LFR5A-11	-	LFR5AIX-11		
	VITARA	1600i	SE4	1997~2002	BKR6E-11	BKR6EGP	BKR6EIX-11		
		2000i	GLX	1997~2002	BP5ES	BPR5EGP	BPR5EIX		
SUBARU	E10				BP5ES	BPR5EGP	BPR5EIX		
	FORESTER	2000	MFI			BKR6E	BKR6EGP	BKR6EIX	
			MFI CATALYZER			BKR6E-11	BKR6EGP	BKR6EIX-11	
			TURBO	2001~	PFR6G	BKR6EGP	BKR6EIX		
			EJ204	2008.1~	SILFR6A-11	-	-		
			FA (Non-TURBO)		SILZKAR7B11	-	-		
			FA (TURBO)		ILKAR8H6	-	-		
			FB		SILZKAR7B11	-	-		
	2500	MFI			PFR5B-11	BKR5EGP	BKR5EIX-11		
		E25I/6 DOHC	2001~	BKR6E-11	BKR6EGP	BKR6EIX-11			
		IMPREZA	2000	MFI			BKR6E	BKR6EGP	BKR6EIX
				MFI CATALYZER			BKR6E-11	BKR6EGP	BKR6EIX-11
				EJ20 TURBO	1996~	PFR6G	BKR6EGP	BKR6EIX	
	EJ20 TURBO			1997~2000	PFR6B	BKR6EGP	BKR6EIX		
	EJ20			2001~	PFR6G	BKR6EGP	BKR6EIX		
	EJ204			2008.1~	SILFR6A-11	-	-		
	FB20			2011.12	SILZKAR7B11	-	-		
		2016.10	DILKAR7B8	-	-				
	2200	EJ22 DOHC	2001~	BKR6E-11	BKR6EGP	BKR6EIX-11			
	2500	EJ25 DOHC	2001~	BKR6E-11	BKR6EGP	BKR6EIX-11			
	LEGACY	1800				BKR6E-11	BKR6EGP	BKR6EIX-11	
		2000				BKR6E-11	BKR6EGP	BKR6EIX-11	
		2200				BKR6E-11	BKR6EGP	BKR6EIX-11	
WRX	2000	VAG, FA20			ILKAR8H6	-	-		
XV	2000	FB20	2012~	SILZKAR7B11	-	-			
	2000		2018~	DILKAR7B8	-	-			
TOYOTA	ALTIS	1600		2003~	BKR5EYA-11	BKR5EGP	BKR5EIX-11		

Brand	Model	CC	Engine Model	Year	OE / Equivalent	G-Power	IX
TOYOTA	ALTIS	1800		2003~	BKR5EYA-11	BKR5EGP	BKR5EIX-11
		1800	2ZR-FE	2013~Present	ILKAR7B11	LKAR7BGP	LKAR7BIX-11S
		2000	3ZR-FE	2013~Present	ILKAR7B11	LKAR7BGP	LKAR7BIX-11S
	ALPHARD	2400	2AZ-FE	2002~2014	BKR6EYA-11	BKR6EGP	BKR6EIX-11
		2500	2AR-FE	2015~2023	ILFR5T-11	-	-
		3000	1MZ-FE	2002~2008	IFR6A-11	BKR6EGP	BKR6EIX-11
		3500	2GR-FE	2008~	DILFR6D11	-	-
	ALTEZZA	2000	1G-FE	1999~2001	BKR6EYA-11	-	BKR6EIX-11
	AVANZA	1300	K3-DE	2002.9~2011.10	BKR6E-11	BKR6EGP	BKR6EIX-11
			K3-VE	2002~2015	DCPR7EA-9	DCPR7EGP	DCPR7EIX
			1NR-VE	2015~	ILKAR6B11	LKAR6AGP	LKAR6AIX-11
		1500	3SZ-VE	2006~2011	DCPR7EA-9	DCPR7EGP	DCPR7EIX
			2NR-VE	2015~	ILKAR6B11	LKAR6AGP	LKAR6AIX-11
	CALDINA	1800	1ZZ-FE	2002~2007	BKR5EYA-11	-	BKR5EIX-11
		2000	3S-GTE		BKR6EIX	-	-
	CAMRY	2000	3S-FE	1988~1997	BCPR6EY-11	-	BCPR6EIX-11
			2S-C		BPR5EY	BPR5EGP	BPR5EIX
			2S-E		BPR5EY-11	BPR5EGP	BPR5EIX-11
			2S-EC		BPR5EY	BPR5EGP	BPR5EIX
			1AZ-FE (ACV31, ACV41, ACV51)	2002~	IFR6T11	BKR6EGP	BKR6EIX-11
		2200	5S-FE	1991~1997	BKR6EKP-11	BKR6EGP	BKR6EIX-11
			2400	2AZ-FE	2002~2011	IFR6T11	BKR6EGP
		2AZ-FXE (AHV40)		2006~2011	IFR6T11	BKR6EGP	BKR6EIX-11
		2500	2AR-FE	2011~	ILFR5T-11	-	-
			2AR-FXE (Hybrid)	2011~	DF5B-8A	-	-
	2AR-FE (ASV70)		2018~	ILFR5T-11	-	-	
	CELICA	2000	3S-GE	1994~	BKR6EYA	BKR6EGP	BKR6EIX
			3S-GE	1995~1996	BKR6EP-8	BKR6EGP	BKR6EIX
			3S-GE	1997~1998	BKR6EYA	BKR6EGP	BKR6EIX
			3S-GE	1999~	BKR6EP-8	BKR6EGP	BKR6EIX
			3S-GTE	1990~1996	BKR6EP-8	BKR6EGP	BKR6EIX
	C-HR	1800	2ZE-FE	2018	ILKAR7B11	LKAR7BGP	LKAR7BIX-11S
	COROLLA	1300	4E-FE		BKR6EYA	BKR6EGP	BKR6EIX
			2E	1993~1996	BPR5EY-11	BPR5EGP	BPR5EIX-11
		1600	4A-FE	1996~	BKR6EYA	BKR6EGP	BKR6EIX
			4A-FE	1996~1998	BKR6EYA	BKR6EGP	BKR6EIX
	FORTUNER	2700	2TR-FE		LFR6C-11	-	-
			Dual VVT-i	2016~Present	DILFR6D8	-	-
	FJ Cruiser	4000	1GR-FE	2010~Present	ILFR5T-11	-	-
	ESTIMA	2400	2TZ-FE	1990~	BKR5EP-11	-	BKR5EIX-11
			2AZ-FE	2006~Present	IFR6T11	BKR6EGP	BKR5EIX-11
		3500	2GR-FE	2006~	DILFR6D11	-	-
	HARRIER	2000	ZSU60/ 65W	2014	ILKAR7B11	LKAR7BGP	LKAR7BIX-11S
		2200	5SFE	1998~2003	BKR6EKP-11	BKR6EGP	BKR6EIX-11
		2400		1998~	IFR6T11	BKR6EGP	BKR5EIX-11
			2AZ-FE	2003~2013	IFR6T11	BKR6EGP	BKR5EIX-11
		3000	1MZ-FE	1998~2006	IFR6T11	BKR6EGP	BKR5EIX-11



Brand	Model	CC	Engine Model	Year	OE / Equivalent	G-Power	IX
TOYOTA	HARRIER	3500	2GR-FE	2005~2013	DILFR6D11	-	-
	HIACE	2000	1RZ	2004~	BPR5EY	BPR5EGP	BPR5EIX
		2400	2RZ	1995~2004	BP5EY	BPR5EGP	BPR5EIX
		2700	2TRFE	2005~	-	-	LF6AIX-11
	HI-LUX	2000	1RZ	1986~	BPR5EY	BPR5EGP	BPR5EIX
			3Y	1986~	BPR5EY	BPR5EGP	BPR5EIX
	INNOVA	2000		2005~	LF6C-11	-	-
			Dual VVT-i	2016	DILFR6D8	-	-
	IQ	1300	1NR-FE	2009.8	ILKAR7B11	LKAR7BGP	LKAR7BIX-11S
	LAND CRUISER	2400	J7	1988~1996	BP5ES	BPR5EGP	BPR5EIX
		4700	2UZ-FE	2002~2008	IFR6T11	-	BKR6EIX-11
	LAND CRUISER	2700	3RZ-FE		BKR5EYA	BKR5EGP	BKR5EIX
	PRADO		2TR-FE	2002~2004	BKR6EYA	BKR6EGP	BKR6EIX
		3400	24V	1996~	BKR5EKB-11	BKR5EGP	BKR5EIX-11
	LITE ACE	1500	5K	1983~1992	BPR5EY	BPR5EGP	BPR5EIX
		1800	2YC	1983~1992	BPR5EY	BPR5EGP	BPR5EIX
		2200	4Y-E	1992~1998	BPR5EY	BPR5EGP	BPR5EIX
	PRIUS	1800	2ZR-FXE	2009.6~	ILKAR7B11	LKAR7BGP	LKAR7BIX-11S
	PRIUS C	1500	1NZ-FXE	2011~	IFR5T11	BKR5EGP	BKR5EIX-11
	RAV4	2000	16V	1994~2000	BKR6EYA-11	BKR6EGP	BKR6EIX-11
	RUSH	1500	3SZ-VE	2008~	DCPR7EA-9	DCPR7EGP	DCPR7EIX
		1500	2NR-VE	2018~	ILKAR6B11	LKAR6AGP	LKAR6AIX-11
	VELLFIRE	2400	2AZ-FE	2009~	IFR6T11	BKR6EGP	BKR6EIX-11
		2500	2AR-FE	2015~2023	ILFR5T-11	-	-
		3500	2GR-FE	2009~	DILFR6D11	-	-
	VIOS	1500	1NZ-FE	2004~2015	BKR5EYA-11	BKR5EGP	BKR5EIX
			2NR-FE	2016~	ILKAR6B11	LKAR6AGP	LKAR6AIX-11
	WISH	1800	1ZZ-FE	2002~	BKR5EYA-11	BKR5EGP	BKR5EIX-11
		1800	2ZR-FAE	2008~PRESENT	ILKAR7B11	LKAR7BGP	LKAR7BIX-11S
		2000	1AZ-FSE	2006~	IFR6A-11	BKR6EGP	BKR6EIX-11
		2000	3ZR-FAE	2008~PRESENT	ILKAR7B11	LKAR7BGP	LKAR7BIX-11S
	UNSER	1800	7KC	1999~2004	BKR5EY-11	-	-
YARIS	1500	1NZ-FE	2006~2013	BKR5EYA-11	BKR5EGP	BKR5EIX-11	
	1500	2NR-FE	2019~	ILKAR6B11	LKAR6AGP	LKAR6AIX-11	
SIENTA	1500	2NR-FE	2016~	ILKAR6B11	LKAR6AGP	LKAR6AIX-11	
STARLET	1000	KP60 (2K)	1978~1984	BP5EY	BPR5EGP	BPR5EIX	
ISUZU	TROOPER	3200	6VD1	1991~1998	BKR6E-11	BKR6EGP	BKR6EIX-11
VOLKSWAGEN	CC	1800	CDA	2012.7	PFR7S8EG	-	-
	D-VAN	1600		1970	BP6HS	-	BPR6HIX
	GOLF	1400	MK 6	2011	SIZFR6B8EG	-	-
		1400	CUK (MK7)	2015.9	PZKER7A8EGS	-	-
		1800	TSI (CDAA)	2009.6~	PFR7S8EG	-	-
		2000	TSI (CDLF)	2009.11~	PFR7S8EG	-	-
	GOLF GTi	2000	ABF	1992.10~	BK7EKU	-	-
			MK 6 (CCZB)		PFR7S8EG	-	-
MK 7, 7.5				PLFER7A8EG	-	-	
BETTLE	1200	I4 TSI	2011	IZFR6P7	-	-	

Brand	Model	CC	Engine Model	Year	OE / Equivalent	G-Power	IX
VOLKSWAGEN	BETTLER	1400	I4 TSI	2011	SIZFR6B8EG	-	-
		1600	BFS	2007.9~	BKUR6ET-10	BKR6EGP	BKR6EIX-11
		2000	AQY	1999.8~2002.8	BKUR6ET-10	BKR6EGP	BKR6EIX-11
	JETTA	1400	I4 TSI		SIZFR6B8EG	-	-
	PASSAT	1800	B7	2010~2014	PLFER7A8EG	-	-
			B8	2016	PLFER7A8EG	-	-
		2000	TSI (TYP 3C) CCZA	2009.11~	PFR7S8EG	-	-
			B8	2016	PLFER7A8EG	-	-
	POLO	1200		2010~2014	IFR6P7	-	-
				2014.8	PZKER7A8EGS	-	-
		1600	AFT	1996.5~	BKUR6ET-10	BKR6EGP	BKR6EIX-11
	POLO GTI	1400		2011	SIZFR6B8EG	-	-
		1600	AFT	1999.10~	BKUR6ET-10	BKR6EGP	BKR6EIX-11
			AJV	1998.8~	BKUR6ET-10	BKR6EGP	BKR6EIX-11
			ARC	1999.10~	BKUR6ET-10	BKR6EGP	BKR6EIX-11
	SCIROCCO	1400	TSI (CAXD)	2008.8~	PZFR6R	-	-
			TSI (CAXA)	2008.11~	PZFR6R	-	-
		2000	TSI (CAXD)	2010	PFR7S8EG	-	-
		2000	TSI (CAXA)	2010	PFR7S8EG	-	-
	SHARAN	2000	7N			-	-
	TIGUAN	1400	TSI (CAVA)	2008.3~	PZFR6R	-	-
			I4 TSI		SIZFR6B8EG	-	-
		2000	CCZ	2010.9	PFR7S8EG	-	-
TOUAREG	3600	FSI	2005.10~	ILZKR7A	-	-	
VOLVO	142	2000	B20E	1968~1975	BP6HS	-	BPR6HIX
	244	2000	B19E	1978~1982	BPR6ES	-	BPR6EIX
	850	2500	GLE	1992~1997	BKR6E	BKR6EGP	BKR6EIX
	940	2300	B230	1990.9~	BPR6ES	BPR6EGP	BPR6EIX
	S40			1998~	BKR5EKU	-	-
	S40 TURBO	2000		2001~	PFR6G	BKR6EGP	BKR6EIX
	S80 TURBO	2000	B5204T5	2001~	PFR6G	BKR6EGP	BKR6EIX
	S80 T6	2800	B6294T6	2001~	PFR6G	BKR6EGP	BKR6EIX
	V40 TURBO	2000		2001~	PFR6G	BKR6EGP	BKR6EIX
	V60	1600		2011.6	ILZTR6A8G	-	-
	XC90	2500	B5254T2	2004~	PFR6G	BKR6EGP	BKR6EIX
	XC90 T6	2900	B6294T6t	2004~	PFR6G	BKR6EGP	BKR6EIX



Technical
Partner

2 Wheeler

APRILLA
BKZ
BMW
BENELLI
CAGIVA
COMEL / JRD

DUCATI
DEMAK
HONDA
KAWASAKI
KTM
LEXUR

MODENAS
MOTO-GUZZI
M.Z
NITRO
NIMOTA
NAZA BIKES

STAR
SUZUKI
SYM
VESPA
YAMAHA



Brand	Model	CC	Engine Model	Year	OE / Equivalent	G-Power	IX
APRILLA	ETV CAPO NORD	1000		2001~	DCPR9E	-	DCPR9EIX
	MOTO 6.5	650		1995~	D8EA	-	DR8EIX
	MX 50	50			B9ES	-	BR9EIX
	PEGASO 650	650			D8EA	-	DR8EIX
	RALLY 50	50			BR8ES	BR8EGP	BR8EIX
	RS 125	125			BR9ES	-	BR9EIX
	RST FUTURA	1000		2001~	DCPR9E	-	DCPR9EIX
	RSV1000R	1000		2004~	DCPR9E	-	DCPR9EIX
	RSV4R	1000			CR9EKB	-	-
	RX 125	125			BR9ES	-	BR9EIX
	RX 250	250			B10EG	-	BR10EIX
	SR 50	50			BR8ES	BR8EGP	BR8EIX
	SR 50 (STREET)	50			B9ES	-	BR9EIX
	TOUNO 1000R	1000		2005~	DCPR9E	-	DCPR9EIX
	TUAREG RALLY 250	250			BR9ES	-	BR9EIX
BKZ	RR110	110			C6HSA	CR6HGP	CR6HIX
	RR110Z	110			C6HSA	CR6HGP	CR6HIX
	TT160	160			CR8E	CR8EGP	CR8EIX
BMW	F650	650		1994~1999	D8EA	-	DR8EIX
	F650 GS	650		2000~2002	D8EA	-	DR8EIX
	GS100	980			BP6ES	BPR6EGP	BPR6EIX
	GS80	800			BP6ES	BPR6EGP	BPR6EIX
	HP4	1000		2017~	LMAR9D-J	-	-
	K100	1000		1983~	D7EA	-	DR7EIX
	K100 RS	1000	16 VALVE	1991~	D7EA	-	DR7EIX
	K100 RT	1000			D7EA	-	DR7EIX
	K1200 GT	1200			DCPR7E	DCPR7EGP	DCPR7EIX
	K75 C	750			D7EA	-	DR7EIX
	K75 S	750			D7EA	-	DR7EIX
	R1100GS	1100			BGP7ET	-	BGP7EIX
	R1100R	1100			BGP7ET	-	BGP7EIX
	R1100RS	1100			BGP7ET	-	BGP7EIX
	R80/7	800			BP6ES	BPR6EGP	BPR6EIX
	R80G	800			BP6ES	BPR6EGP	BPR6EIX
	R80S	800			BP6ES	BPR6EGP	BPR6EIX
	S1000RR	1000		2017~	LMAR9D-J	-	-
BENELLI	150S	150			CR8E	CR8EGP	CR8EIX
	302R ABS	300		2017~	CR8E	CR8EGP	CR8EIX
	BRIXTON 150	150			DR8EA	-	-
	LEONCINO	500		2018~	CR8E	-	CR8EIX
	TNT 600S	600			CR8E	CR8EGP	CR8EIX
	TNT R	1131		2015~	CR9E	-	CR9EIX
	TRK 251	251			CR8E	CR8EGP	CR8EIX
	TRE 1130 K	1131			CR9E	-	CR9EIX
TRK 502 ABS	500		2017~	CR8E	CR8EGP	CR8EIX	
CAGIVA	125	125			B9ES	-	BR9EIX
	CITY	50		1994~	BP8HS	BPR8HGP	BPR8HIX



Brand	Model	CC	Engine Model	Year	OE / Equivalent	G-Power	IX
CAGIVA	ELEFANT 750	750		1987~	DPR9EA-9	-	DPR9EIX-9
	ELEFANT 900	900		1991~	DPR9EA-9	-	DPR9EIX-9
	MITO 125	125			B9ES	-	BR9EIX
	MITO SP125	125			B9ES	-	BR9EIX
	RAPTOR	650		2000~	CR8EK	CR8EGP	CR8EIX
	RAPTOR 650	650		2000~	CR8E	CR8EGP	CR8EIX
	SCOOTER (D)	50			BP8HS	BPR8HGP	BPR8HIX
	SS250	250			B8ES	BR8EGP	BR8EIX
	SST250	250			B8ES	BR8EGP	BR8EIX
	SX250	250			B8ES	BR8EGP	BR8EIX
	SXT250	250			B8ES	BR8EGP	BR8EIX
	V-RAPTOR	650		2000~	CR8E	CR8EGP	CR8EIX
	X-TRA V-RAPTOR	1000		2003~	CR8EK	CR8EGP	CR8EIX
	COMEL / JRD	120 SPORT	120			C6HSA	CR6HGP
ADMIRAL RD-150R		150			C6HSA	CR6HGP	CR6HIX
COMET ACERR					C6HSA	CR6HGP	CR6HIX
CYCLONE 150		150			C6HSA	CR6HGP	CR6HIX
HARIMAU 150		150			C6HSA	CR6HGP	CR6HIX
MANJA 110		110			C6HSA	CR6HGP	CR6HIX
MANJA 125		125			C6HSA	CR6HGP	CR6HIX
MANJA GS5		125			C6HSA	CR6HGP	CR6HIX
MANJA II		125			C6HSA	CR6HGP	CR6HIX
MANJA III		125			C6HSA	CR6HGP	CR6HIX
MAXX					C6HSA	CR6HGP	CR6HIX
MONYET 70		70			C6HSA	CR6HGP	CR6HIX
QUEST 125R		125			C6HSA	CR6HGP	CR6HIX
RAINBOW RB 125		125			C6HSA	CR6HGP	CR6HIX
RC 125		125			C6HSA	CR6HGP	CR6HIX
SNOW 125R		125			C6HSA	CR6HGP	CR6HIX
STORM 125Z		125			C6HSA	CR6HGP	CR6HIX
SUMMER 70		70			C6HSA	CR6HGP	CR6HIX
SWNG					C6HSA	CR6HGP	CR6HIX
TRAVELLER 150		150			C6HSA	CR6HGP	CR6HIX
TURBULENCE 125	125			C6HSA	CR6HGP	CR6HIX	
DUCATI	618	700			-	-	DCR8EIX
	695	700			-	-	DCR8EIX
	748	748			-	-	DCR9EIX
	750	750			-	-	DCR8EIX
	848	849		2007~	MAR10A-J	-	-
	888	888			-	-	DCR9EIX
	904	1000			-	-	DCR8EIX
	916	916		1994~	-	-	DCR9EIX
	989	1000			MAR10A-J	-	-
	992	1000			-	-	DCR8EIX
	996	1000			-	-	DCR9EIX
	1078	1100			-	-	DCR8EIX
	1098	1100		2007~2008	MAR10A-J	-	-

Brand	Model	CC	Engine Model	Year	OE / Equivalent	G-Power	IX
DUCATI	1099	1100			MAR10A-J	-	-
	DESMONSEDICI	1000			MAR10A-J	-	-
	DIAVEL	1200			MAR9A-J	-	-
	GT1000	1000			MAR10A-J	-	-
	HYPERMOTARD	1100			DCPR8E	-	DCPR8EIX
	HYPERMOTARD 796	800			DCPR8E	-	DCPR8EIX
	MONSTER 696	700			DCPR8E	-	DCPR8EIX
	MONSTER 796	800			DCPR8E	-	DCPR8EIX
	MONSTER1100 S/EVO	1100			DCPR8E	-	DCPR8EIX
	MULTISTRADA 1200S	1200			MAR9A-J	-	-
	MULTISTRADA	1200			MAR10A-J	-	-
	TWIN SPARK						
	PANIGALE	1200			MAR9A-J	-	
	SCRAMBLER	800			DCPR8E	-	DCPR8EIX
	SPORT 1000S	1000			DCPR8E	-	DCPR8EIX
	STREETFIGHTER 848	850			DCPR8E	-	DCPR8EIX
STREETFIGHTER S	1100			MAR10A-J	-	-	
DEMAK	ALL SCOOTER SERIES	110			C6HSA	CR6HGP	CR6HIX
	DTM 150	150			DR8EA	-	-
	MATRIX 110	110			C6HSA	CR6HGP	CR6HIX
	SMART 110	110			C6HSA	CR6HGP	CR6HIX
	SMART-R 125	125			C6HSA	CR6HGP	CR6HIX
	SPARKS 100	100			C6HSA	CR6HGP	CR6HIX
HONDA	ADV 150	150			MR8K-9	-	-
	ADV 160	160		2022	LMAR8L-9	-	-
	ADV 750	750		2017	IFR6G-11K	-	-
	AIRBLADE	125			CPR7EA-9	CPR7EAGP-9	-
	BEAT	110		2017	MR9C-9N	CPR9EAGP-9	CPR9EAIX-9
	C70	70			C6HSA / C7HSA	CR6HGP / CR7HGP	CR6HIX / CR7HIX
	C80	90			C6HSA / C7HSA	CR6HGP / CR7HGP	CR6HIX / CR7HIX
	C90	90			C6HSA / C7HSA	CR6HGP / CR7HGP	CR6HIX / CR7HIX
	CB 100	100			D7EA	-	DR7EIX
	CB 250R	250		2022	SIMR8A9	-	-
	CB 400SF	400			CR8EH-9	-	CR8EHIX-9
	CB 500X	500		2015~Present	CPR8EA-9	CPR8EAGP-9	CPR8EAIX-9
	CB 500F/FF	500		2015~Present	CPR8EA-9	CPR8EAGP-9	CPR8EAIX-9
	CB 650F	650		2014~Present	CR9EH-9	-	-
	CB 650R	650		2018~Present	IMR9E-9HES	-	-
	CB 1000	1000		2018~Present	IMR9E-9HES	-	-
	CB 1100	1100		2019	LMAR8A-9S	-	-
	CBF 250	250		2018	SIMR8A9	-	-
	CBR 1000RR	1000		2019~2022	IMR9E-9HES	-	-
	CBR 1000RR	1000		2023	SILMAR10C9S	-	-
	CBR 150R	150			CR8E	CR8EGP	CR8EIX
	CBR 150R	150		2021~Present	MR9C-9N	CPR9EAGP-9	CPR9EAIX-9
CBR 250R	250		2012~2020	SIMR8A9	-	-	
CBR 250RR	250		2020~Present	SILMAR9C9	-	-	



Brand	Model	CC	Engine Model	Year	OE / Equivalent	G-Power	IX
HONDA	CBR 400RR	400			CR8EH-9	-	CR8EHIX-9
	CBR 500F	500			CPR8EA-9	CPR8EAGP-9	CPR8EAIX-9
	CBR 500R	500		2013~Present	CPR8EA-9	CPR8EAGP-9	CPR8EAIX-9
	CBR 600RR	600		2013	IMR9C-9H	-	-
	CBR 600RR	600		2021~Present	SILMAR9C9	-	-
	CBR 650	650		2017	CR9EH-9	-	-
	CBR 650F	650		2014~Present	CR9EH-9	-	-
	CBR 650/RA	650		2019~Present	IMR9E-9HES	-	-
	CLICK 110	110			CR7EH-9	-	-
	CRF 250/ M/ RALLY	250		2012	SIMR8A9	-	-
	CRF 1000 AFRICA TWIN	1000		2018~Present	SILMAR8A9S	-	-
	DASH 125	125		2015~Present	CPR6EA-9	CPR6EAGP-9	-
	DREAM	100		2004~	C6HSA / C7HSA	CR6HGP / CR7HGP	CR6HIX / CR7HIX
	EX5	100			C6HSA / C7HSA	CR6HGP / CR7HGP	CR6HIX / CR7HIX
	EX5 CLASS	100			C6HSA / C7HSA	CR6HGP / CR7HGP	CR6HIX / CR7HIX
	EX5 CLASS 1	100			C6HSA / C7HSA	CR6HGP / CR7HGP	CR6HIX / CR7HIX
	EX5 FI (NEW)	110			CPR6EA-9S	CPR6EAGP-9	-
	FAME	90			C6HSA / C7HSA	CR6HGP / CR7HGP	CR6HIX / CR7HIX
	FORZA (NSS 300)	300		2018	LMAR8A-9	-	-
	FUTURE	125			CPR6EA-9S	CPR6EAGP-9	-
	GL 100	100			D7EA	-	DR7EIX
	GL 125	125			D7EA	-	DR7EIX
	GL 145	145			D7EA	-	DR7EIX
	GOLDWIND 1200GL	1200			DPR7EA-9	-	DPR7EIX-9
	GOLDWIND 1500GL	1500			DPR7EA-9	-	DPR7EIX-9
	GOLDWING 1800GL	1800		2013~2019	BKR5E-11	BKR5EGP	BKR5EIX-11
	GOLDWING 1800GL	1800		2020	CR6HSB-9	-	-
	HURRICANE	600			B6ES	-	-
	ICON	110			CPR8EA-9	CPR8EAGP-9	CPR8EAIX-9
	INTEGRA700	700			IFR6G-11K	-	-
	MONKEY	125		2018	CPR6EA-9	CPR6EAGP-9	-
	MSX 125	125		2017	CPR6EA-9	CPR6EAGP-9	-
	NC 700	700			IFR6G-11K	-	-
	NC 750X	750		2014	IFR6G-11K	-	-
	NSS 250	250		2021	LMAR8L-9	-	-
	NSS 300	300		2014	LMAR8L-9	-	-
	NSR 150R	150			B8ES	BR8EGP	BR8EIX
	NX 105	105			BP6ES	BPR6EGP	BPR6EIX
	PCX 150 (K97)	150		2018	MR8K-9	-	-
	PCX150	150		2012~	CPR7EA-9	CPR7EAGP-9	-
	RAIDER	150			B8ES	BR8EGP	BR8EIX
	REBEL	500		2017~Present	CPR8EA-9	CPR8EAGP-9	CPR8EAIX-9
	RS150	150			MR9C-9N	CPR9EAGP-9	CPR9EAIX-9
	RSX	150		2023	MR9C-9N	CPR9EAGP-9	CPR9EAIX-9
	SPACY	110			CPR8EA-9	CPR8EAGP-9	CPR8EAIX-9
	SUPER CUB (C125)	125		2018	CPR6EA-9	CPR6EAGP-9	-
	VARIO 125	125			CPR9EA-9	CPR9EAGP-9	CPR9EAIX-9

Brand	Model	CC	Engine Model	Year	OE / Equivalent	G-Power	IX
HONDA	VARIO 150	150		2018	CPR9EA-9	CPR9EAGP-9	CPR9EAIX-9
	VARIO 160	160		2022	LMAR8L-9	-	-
	WAVE 100	100			C6HSA / C7HSA	CR6HGP / CR7HGF	CR6HIX / CR7HIX
	WAVE 110	110			CPR6EA-9S	CPR6EAGP-9	-
	WAVE 125	125			CPR6EA-9	CPR6EAGP-9	-
	WAVE ALPHA	110			CPR6EA-9	CPR6EAGP-9	-
	WAVE DASH (REPSOL)	110			CPR6EA-9S	CPR6EAGP-9	-
	WAVE DASH 110	110			CPR6EA-9S	CPR6EAGP-9	-
KAWASAKI	1400GTR/1400GTR ABS	1400		2008~2013	CR9EIA-9	-	-
	AN90 (HONEY)	90			C6HSA	CR6HGP	CR6HIX
	AXM 100	100			C6HSA	CR6HGP	CR6HIX
	BALIUS	250		2007	CR9E	-	CR9EIX
	D-TRACKER	150		2011~2012	CR7HSA	CR7HGP	CR7HIX
	D-TRACKER	125			CR8E	CR8EGP	CR8EIX
	D-TRACKER X	250			CR8E	CR8EGP	CR8EIX
	ELIMINATOR 250	250		1995	CR8HSA	-	CR8HIX
	ER-6N/F	600		2006~2014	CR9EIA-9	-	-
	GPZ500S	500		1994~1996	DR9EA	-	-
	H2	1000			SILMAR9B9	-	-
	K115	115			BP7HS	BPR7HGP	BPR7HIX
	K-I SPORT	115			BP7HS	BPR7HGP	BPR7HIX
	KLX 110	110		2002~	CR6HSA	CR6HGP	CR6HIX
	KLX 150/ KLX 150L	150		2009~2014	CR7HSA	CR7HGP	CR7HIX
	KLX 250	250			CR8E	CR8EGP	CR8EIX
	KLX 450R	450		2008~2012	CPR8EB-9	-	-
	KR 150	150			BP8ES	BR8EGP	BR8EIX
	KR 150	150		2007~2008	B9ECS	-	-
	KRR 150	150			BP8ES	BR8EGP	BR8EIX
	KRX 150	150			B9ES	-	BR9EIX
	KRZ 150	150			B9ES	-	BR9EIX
	KSR 110 / KSR PRO	110		2010~2014	CR6HSA	CR6HGP	CR6HIX
	KX 250 / KX 250 F	250		2008~2010	CR8E	CR8EGP	CR8EIX
	KX 250 F	250		2011~2012	CPR8EB-9	-	-
	KX 450 F	450		2008~2012	CPR8EB-9	-	-
	NINJA 250R	250			CR8E	CR8EGP	CR8EIX
	NINJA 250SL	250		2014~Present	MR8CI-8	CR8EGP	CR8EIX
	NINJA 650	650			CR9EIA	-	-
	NINJA KRR ZX 150	150			BR9ECS	-	BR9EIX
	RR 100 NINJA/VICTOR	100			BP8ES	BPR8EGP	BPR8EIX
	SERPICO 150	150			B9ES	-	BR9EIX
	VERSYS 1000	1000		2012~2013	CR9EIA	-	-
	VERSYS 650	650		2007~2016	CR9EIA-9	-	-
VULCAN 1500	1500		1996~1997	DPR7EA-9	-	DPR7EIX-9	
VULCAN 1700	1700		2009~2013	ILZKAR7B11	-	-	
VULCAN 500 (BELT)	500		1995~1996	D9EA	-	DR9EIX	
VULCAN 500 (CHAIN)	500		1997	DR9EA	-	DR9EIX	
VULCAN 750	750		1994~1995	DPR7EA-9	-	-	



Brand	Model	CC	Engine Model	Year	OE / Equivalent	G-Power	IX
KAWASAKI	VULCAN 800	800		1996~2000	CR7E	-	CR7EIX
	VULCAN 900	900		2006~2013	CPR7EA-9	-	-
	VULCAN 250	250		2009	CR8E	CR8EGP	CR8EIX
	W 800	800		2013	CR8E	CR8EGP	CR8EIX
	Z1000	1000		2007~	CR9EIA-9	-	-
	Z1000SX ABS	1000		2011~2013	CR9EIA-9	-	-
	Z250	250		2013~2014	CR8E	CR8EGP	CR8EIX
	Z250 SL	250		2014	MR8CI-8	CR8EGP	CR8EIX
	Z750	750		2007~2012	CR9E	-	CR9EIX
	Z800	800		2013~2014	CR9EK	-	CR9EIX
	Z900	900		2017	CR9EIA-9	-	-
	ZRX 1200	1200		2012~2013	CR9EK	-	CR9EIX
	ZSR 150 (CYCLONE)	150		1997	B8ES	BR8EGP	BR8EIX
	ZX-10R	1000		2008~2013	CR9EIA-9	-	-
	ZX-14R	1400		2010~2013	CR9EIA	-	-
	ZX-4	400			CR9E	-	CR9EIX
	ZX-636	636		2013~	CR9E	-	CR9EIX
	ZX-6R	600		2007~2012	CR9E	-	CR9EIX
	ZX-7R	700			CR9E	-	CR9EIX
	ZX-9R	900			CR9E	-	CR9EIX
	ZXR 250	250		1997	CR9E	-	CR9EIX
	ZZR 1100	1100			CR9E	-	CR9EIX
	ZZR 1400	1400		2008~2013	CR9EIA	-	-
ZZR 250	250		1994	CR8HSA	-	CR8HIX	
KTM	DUKE 1290	1290			LKAR9BI9 + LMAR7A-9	-	-
	DUKE 200	200			LKAR8A-9	-	LKAR8AI-9
	DUKE 390	390			LKAR8A-9	-	LKAR8AI-9
	DUKE 690	690			LKAR8AI-9	-	-
	DUKE 990	990			LKAR8BI9	-	-
	RC8R1190	1190			LKAR9BI9 + LMAR7A-9	-	-
	SUPERMOTO 990	990			KR8DI	-	-
LEXUR	EVO	110			C7HSA	CR7HGP	CR7HIX
	LUCKY	110			C7HSA	CR7HGP	CR7HIX
	SC 125	125			C7HSA	CR7HGP	CR7HIX
	X-DREAM	110			C7HSA	CR7HGP	CR7HIX
MODENAS	ACE 115	115			C7HSA	CR7HGP	CR7HIX
	CERIA	100			C7HSA	CR7HGP	CR7HIX
	DINAMIK 125	125			B9ES	-	BR9EIX
	ELEGAN 150	150			CR8E	CR8EGP	CR8EIX
	ELITE 150	150			C7HSA	CR7HGP	CR7HIX
	GT 128	128			C6HSA	CR6HGP	CR6HIX
	JAGUH	175			CR8E	CR8EGP	CR8EIX
	KARISMA	100			C7HSA	CR7HGP	CR7HIX
	KRISS	100			C6HSA	CR6HGP	CR6HIX
	KRISS 2	110			C6HSA	CR6HGP	CR6HIX
	KRISS SE	110			C6HSA	CR6HGP	CR6HIX
	KRISS SG	110			C6HSA	CR6HGP	CR6HIX

Brand	Model	CC	Engine Model	Year	OE / Equivalent	G-Power	IX
MODENAS	KRISTAR	110			C7HSA	CR7HGP	CR7HIX
	MR1	110			C6HSA	CR6HGP	CR6HIX
	NS200	200			CPR8EA-9	CPR8EAGP-9	CPR8EAIX-9
	PASSION	125			CR8E	CR8EGP	CR8EIX
	RS200	200			CPR8EA-9	CPR8EAGP-9	CPR8EAIX-9
	X-CITE	130			C6HSA	CR6HGP	CR6HIX
MOTO-GUZZI	1100 SPORT	1100		1994~	BPR6ES	BPR6EGP	BPR6EIX
	CALIFORNIA 1100	1100		1994~	BPR6ES	BPR6EGP	BPR6EIX
	NEVADA 750	750		2004~	BP8ES	BR8EGP	BR8EIX
M.Z	CLASSIC 120	120			C7HSA	CR7HGP	CR7HIX
	MANTIZZ 125	125			C7HSA	CR7HGP	CR7HIX
	MOSKITO 125	125			C7HSA	CR7HGP	CR7HIX
	MZ 125SM/SX	125			CR8E	CR8EGP	CR8EIX
	PERINTIS 120	120			C7HSA	CR7HGP	CR7HIX
NITRO	ACTION AIR				C7HSA	CR7HGP	CR7HIX
	BABY STAR 50	50			BP7HS	BPR7HGP	BPR7HIX
	BINTANG I & II 125	125			C7HSA	CR7HGP	CR7HIX
	CITY JUMBO				C7HSA	CR7HGP	CR7HIX
	CITY STAR 125	125			C7HSA	CR7HGP	CR7HIX
	DAELIM DAYSTAR				CR8EH-9	-	CR8EHIX-9
	ENERGU				C7HSA	CR7HGP	CR7HIX
	GOLDEN STAR 125	125			C7HSA	CR7HGP	CR7HIX
	GRAND 125	125			C7HSA	CR7HGP	CR7HIX
	GRAND SLAM				D8EA	-	DR8EIX
	IMPALA	115			C7HSA	CR7HGP	CR7HIX
	JANGGO				C7HSA	CR7HGP	CR7HIX
	MEGASTAR 150	150			C7HSA	CR7HGP	CR7HIX
	NX5				C7HSA	CR7HGP	CR7HIX
	POWER				C7HSA	CR7HGP	CR7HIX
	RAMBO				D8EA	-	DR8EIX
	RANGER I & II				D8EA	-	DR8EIX
	ROADWIN 125	125			CR8EH-9	-	CR8EHIX-9
	ROYAL I & II 125	125			C7HSA	CR7HGP	CR7HIX
	SILVER STAR 150	150			C7HSA	CR7HGP	CR7HIX
	SONIC				C7HSA	CR7HGP	CR7HIX
	STAR 125	125			C7HSA	CR7HGP	CR7HIX
	STRIKER				C7HSA	CR7HGP	CR7HIX
	SUMMER STAR 125	125			C7HSA	CR7HGP	CR7HIX
	SUPER GRAND 150	150			C7HSA	CR7HGP	CR7HIX
	SUPER IMPALA I, II, III	110			C7HSA	CR7HGP	CR7HIX
	SUPER STAR 125	125			C7HSA	CR7HGP	CR7HIX
SUPREME GRAND 150	150			C7HSA	CR7HGP	CR7HIX	
WINDSTAR I, II, III & X				D8EA	-	DR8EIX	
WINSTAR 250	250			C7HSA	CR7HGP	CR7HIX	
NIMOTA	CITY SPORT 130	130			C6HSA / C7HSA	CR6HGP / CR7HGP	CR6HIX / CR7HIX
	RANGER X	150			C6HSA / C7HSA	CR6HGP / CR7HGP	CR6HIX / CR7HIX
	TWIST R				C6HSA / C7HSA	CR6HGP / CR7HGP	CR6HIX / CR7HIX



Brand	Model	CC	Engine Model	Year	OE / Equivalent	G-Power	IX
NAZA BIKES	BLADE 250, 650	250, 650			CR8E	CR8EGP	CR8EIX
	BLITZ 150	150			CR8E	CR8EGP	CR8EIX
	CRUISE 250, 650	250, 650			CR8E	CR8EGP	CR8EIX
	CRUISE II 250	250			CR8E	CR8EGP	CR8EIX
	FLASH 125	125			C6HSA / C7HSA	CR6HGP / CR7HGP	CR6HIX / CR7HIX
	GEMILANG I, II 150	150			C7HSA	CR7HGP	CR7HIX
	GTR 150	150			DPR7EA-9	DPR7EGP-9	DPR7EIX-9
	GTR 170	170			DPR7EA-9	DPR7EGP-9	DPR7EIX-9
	NZ 125R	125			C6HSA / C7HSA	CR6HGP / CR7HGP	CR6HIX / CR7HIX
	PRISMA 110, 125	110, 125			C6HSA / C7HSA	CR6HGP / CR7HGP	CR6HIX / CR7HIX
	SYMPHONY 125	125			C6HSA / C7HSA	CR6HGP / CR7HGP	CR6HIX / CR7HIX
STAR	EVO 110	110			C6HSA / C7HSA	CR6HGP / CR7HGP	CR6HIX / CR7HIX
	JET 2				C6HSA / C7HSA	CR6HGP / CR7HGP	CR6HIX / CR7HIX
	VISA 110	110			C6HSA / C7HSA	CR6HGP / CR7HGP	CR6HIX / CR7HIX
	WIZH 2				C6HSA / C7HSA	CR6HGP / CR7HGP	CR6HIX / CR7HIX
SUZUKI	BELANG / RAIDER 150	150			CR8E	CR8EGP	CR8EIX
	FC 110	110			C6HSA	CR6HGP	CR6HIX
	FD 110X	110			C6HSA	CR6HGP	CR6HIX
	FX 110	110			C6HSA	CR6HGP	CR6HIX
	FX 125	125			CR8E	CR8EGP	CR8EIX
	FX 150	150			CR8E	CR8EGP	CR8EIX
	GSX 110	110			C6HSA	CR6HGP	CR6HIX
	GSX S150/ R150	150			MR8E-9	CPR8EAGP-9	CPR8EAIX-9
	GSX S1000F	1000			CR9EIA-9	-	-
	GSX-R600 (08")	600			CR9EIA-9	-	-
	GSZ-R1000 (07")	1000			CR9EIA-9	-	-
	Nex	110			CPR7EA-9	CPR7EAGP-9	-
	RC 80 · RC 100	80,100			BP7HS	BPR7HGP	BPR7HIX
	RG SPORT 110	110			BP8ES	BR8EGP	BR8EIX
	RGV 120	120			BP8ES	BR8EGP	BR8EIX
	RGX 120	120			BP8ES	BR8EGP	BR8EIX
	RR 110 (BEST)	110			BP8HS	BPR8HGP	BPR8HIX
	SHOGUN 125 · RR	125			C6HSA	CR6HGP	CR6HIX
	SKYDRIVE	125			C6HSA	CR6HGP	CR6HIX
	SMASH	110			C6HSA	CR6HGP	CR6HIX
	SMASH PRO	125			C6HSA	CR6HGP	CR6HIX
	SMASH REVO	110			C6HSA	CR6HGP	CR6HIX
	SMASH V115	115			C6HSA	CR6HGP	CR6HIX
	STEP 125	125			C6HSA	CR6HGP	CR6HIX
	TRS 118	120			BP8HS	BPR8HGP	BPR8HIX
	TXR 150	150			BP8ES	BR8EGP	BR8EIX
	V 100	100			BP7HS	BPR7HGP	BPR7HIX
VR 125	125			CR8E	CR8EGP	CR8EIX	
VS 125	125			CR8E	CR8EGP	CR8EIX	
SYM	ATTILA ELIZABETH				CR7HSA	CR7HGP	CR7HIX
	BONUS 110/ E-BONUS 110	110			C6HSA	CR6HGP	CR6HIX

Brand	Model	CC	Engine Model	Year	OE / Equivalent	G-Power	IX
SYM	CRUISYM 250	250		2018~	CR8E	CR8EGP	CR8EIX
	EVO 250	250			CR8E	CR8EGP	CR8EIX
	GTS 200	200			CR8E	CR8EGP	CR8EIX
	Jet 14 SCOOTER	125		2018~	CR7HSA	CR7HGP	CR7HIX
	JET 14 200 SCOOTER	200			CR7HSA	CR7HGP	CR7HIX
	JET POWER 125	125			CR7HSA	CR7HGP	CR7HIX
	JET X 150 SCOOTER	150			CR7HSA	CR7HGP	CR7HIX
	JOYRIDE 110	110			C6HSA	CR6HGP	CR6HIX
	MAXSYM400i	400			CR8E	CR8EGP	CR8EIX
	MAXSYM TL500	500			CPR8EA-9	CPR8EAGP-9	CPR8EAIX-9
	MIO 100	100			CR7HSA	CR7HGP	CR7HIX
	MIO 110	110			CR7HSA	CR7HGP	CR7HIX
	RADAX 125	125			C6HSA	CR6HGP	CR6HIX
	SPORT BONUS	110			C6HSA	CR6HGP	CR6HIX
	SPORT BONUS 115	115			CR7HSA	CR7HGP	CR7HIX
	SPORT RIDER 125i	125			CR7HSA	CR7HGP	CR7HIX
	SYMPHONY 150SR	150		2010~	CR7HSA	CR7HGP	CR7HIX
	T2 250i	250			CR8E	CR8EGP	CR8EIX
	TUSCANI 150	150		2023	CR7HSA	CR7HGP	CR7HIX
	VF3i	185		2018~	CPR8EA-9	CPR8EAGP-9	CPR8EAIX-9
VESPA	150 SUPER	150			BP4HS	-	-
	200 RALLY	200			B6ES	-	-
	P150 · XP150 ·	150			BP4HS	-	-
	SPRINT	150			BP4HS	-	-
YAMAHA	135 LC	135			CPR8EA-9	CPR8EAGP-9	CPR8EAIX-9
	EGO AVANTIZ	125			CR6HSA	CR7HGP	CR7HIX
	EGO LC125	125			CR7E	CR7EGP	CR7EIX
	EGO S115	115			C7HSA	CR7HGP	CR7HIX
	EGO SOLARIZ	125			CR6HSA	CR7HGP	CR7HIX
	EGO GEAR	125			CR6HSA	CR7HGP	CR7HIX
	EZ 115	115			CR6HSA	CR7HGP	CR7HIX
	FZ 150	150			CR8E	CR8EGP	CR8EIX
	LAGENDA 110	110			C7HSA	CR7HGP	CR7HIX
	LAGENDA 115 FI (NEW)	115			CR7HSA	CR7HGP	CR7HIX
	MT-15	150			MR8E-9	CPR8EAGP-9	CPR8EAIX-9
	MT-25	250			LMAR8A-9	-	-
	MT-07	700			LMAR8A-9	-	-
	MT-09	847			CPR9EA-9	CPR9EAGP-9	CPR9EAIX-9
	MT-09 TRACER	847			CPR9EA-9	CPR9EAGP-9	CPR9EAIX-9
	MT-09	890	MTN890-BHW2	2022	LMAR9A-9	-	-
	NMAX	150			CPR8EA-9	CPR8EAGP-9	CPR8EAIX-9
	NOUVO 135LC	135			CR7E	CR8EGP	CR8EIX
	NOUVO AT 115	115			CR7HSA	CR7HGP	CR7HIX
	NVX 155	155			CPR8EA-9	CPR8EAGP-9	CPR8EAIX-9
	RS 125R	125			BP7HS	BPR7HGP	BPR7HIX
	RXS 115	115			BP7HS	BPR7HGP	BPR7HIX
	RXZ 135	135			BP8ES	BR8EGP	BR8EIX



Brand	Model	CC	Engine Model	Year	OE / Equivalent	G-Power	IX	
YAMAHA	SRE	100			C7HSA	CR7HGP	CR7HIX	
	SR-LAGENDA 100	100			C7HSA	CR7HGP	CR7HIX	
	SRV	540			C7HSA	CR7HGP	CR7HIX	
	SRX	500			C7HSA	CR7HGP	CR7HIX	
	SS100 II	100			BP7HS-10	BPR7HGP	BPR7HIX	
	TMAX	560			LMAR7G	-	-	
	TZM 150	150			BR9ES	-	BR9EIX	
	TZR 125 · 250A	125, 250			BR9ES	-	BR9EIX	
	VIRAGO XV 250	250			CR6HS	CR6HGP	CR6HIX	
	VIRAGO XV 535	535			BPR7ES	BPR7EGP	BPR7EIX	
	XJ6 DIVERSION	600			CR9E	-	CR9EIX	
	XMAX	250			LMAR8A-9	-	-	
	XVS 650 DRAG STAR	650			1997~	DPR7EA-9	DPR7EGP-9	DPR7EIX-9
	XVZ 13 AJ ROYAL STAR	1300				DPR7EA-9	DPR7EGP-9	DPR7EIX-9
	Y 110	110				BP7HS	BPR7HGP	BPR7HIX
	Y100 II	100				BP7HS-10	BPR7HGP	BPR7HIX
	Y125 Z · ZR	125				B8ES	BR8EGP	BR8EIX
	Y15Z	150				CR8E	CR8EGP	CR8EIX
	Y16ZR	160				CPR8EA-9	CPR8EAGP-9	CPR8EAIX-9
	YP250 MAJESTY	250				DR8EA	DR8EGP	DR8EIX
	YZF-R1		1000		2004~2008	CR9EK	-	CR9EIX
					2009~	LMAR9E-J	-	-
						MR8E-9	CPR8EAGP-9	CPR8EAIX-9
					CR9E	CR8EGP	CR9EIX	
YZF-R15	155				MR8E-9	CPR8EAGP-9	CPR8EAIX-9	
YZF-R25	250				CR9E	CR8EGP	CR9EIX	
YZF-R6	600			1998~	CR10EK	-	-	

Commercial & Industrial

DOLMAR
FUJI ROBIN
HOMELITE
HONDA

HUSQVARNA
KIORITZ (ECHO)
KYMCO
MAKITA

McCULLOCH
REMINGTON
STIHL
SOLO

TANAKA
YAMAHA
YANMAR



GENERATOR

Brand	Model	NGK
FUJI ROBIN	EC02A	BM7A
	EC04-3	B7HS
HONDA	EBO, E100, E300,3400	CM6
	E600, E900, EG1000 (G28), GX22	C6HSA
	E1500 (G42), E2000, E2500, E2800, ED1000, EG1500 (G42)	B6HS
	E1500K4, EB4000, EBK2500K1, EBK2600, EBK3600K	BR4HS
	EG1200Z,EG1400Z,EG1500	BR4HS
	E1500 (G200), E2500 (G300), E3500 (G400), EC1500, EG1500 (G200)	B4H
	E4500 (G400), EB1500, EB1600, EB1800, EB1900, EB2800	BPR4HS-10
	EB3800, EBK1600, EBK2000, EC1500 (COI), EG1500 (G200) CD	BPR4HS-10
	EM1600, EM1800, EM1900, EM2200, EM4000	BPR4HS-10
	EB1000,ED300,ED400	BMR4A
	EB1200X, 1300X, 1400X, 1500X, EB1800X, B2200X	BPR6ES
	EB2500/X,EB3000S/X,EB3500X,EB4500,EB5000	BPR6ES
	ED1000X,EG850X,EG1000X	BPR6ES
	EG1300X,EG1400/X,EG4500,EG5000	BPR6ES
	EC1000, EC1500K4, ECK1500, EF1000K, EG850, EG1000K, EG1200	BR4HS
	EC1500, EG1000 (G35)	B6HS
	ED300/K1, EM500 (84'), EM600	BPMR4A-10
	ED300/K1, EM400, EM500/K1	BPMR6A-10
	EG550, EG650, EM650	BMR4A
	EG3000/X, EG5000X, EM350, EM1900X, EM2200X, EM2500C/X, EM3000X	BPR5ES
	EM4500CX/CX1/CXS/CXS1, EM4500X/SX. EM5000SX/CXS1	BPR5ES
	EN3500,EN5000	BPR5ES
	EM25/K1/K2, EM30/K1/K2, EM1200X, EM1499X, EM1500X, EM3000C	BPR6ES
	EM4500, EM5000, EN2000, EN2500	BPR6ES
EM3000, ET5000	B6ES	
GX110, GX120, GX140, G160, GX240, GX270, GX390	BPR6ES	
YAMAHA	ET500,600/A,650,800,900/A,950	B5ES
	ET1500/D/M/S, EF1500S	B7HS
	EC1200, 2800, 42000V, 50000V, 5000E	BP6HS
	EF200A/DV,600S,800,900S, 1000/B, 1200A/DA/DV, 1400A/DV/H	BP6HS
	EF1600/R, 1700/A/DV, 1800, 2000A/H/DV, 2100, 2400A/DV, 2500/R	BP6HS
	EF2600, 2800A/H/DV, 3200, 3600E/DV, 3800/R, 4000/E/DV/K	BP6HS
	EF4300,4400E/DV,5000E/DV	BP6HS
	EF5000,5400,6000	BP5ES
	EF2300/A/S/SE, 2800iSE, 4000/A, 5500/A, 6000DVE/E/TE	BP4ES
	EF2000HK/K, 2800HK/K	BP4HS
YANMAR	YSG550E, 750A, 750AE, 750E	BPM4A
	YSG1505, 2005, 2505, 3005, 3505	BP5ES
	YSG1506,2006,2506,3006,3506	BP5ES



BRUSH CUTTER

Brand	Model	NGK
DOLMAR	MS30U, 340, 2600, 3300, 4000, 4100, 4150, 4500	BPM7A
	MS30U, 221,250,300, 310	BM7A
	LT210, BC210, BC212	BM6F
	LT250	BM7A
	BC250, 330, 400, LT160	BPM6F
FUJI ROBIN	BE221, NBF171, NBF211, NBF251	BM7A
	BH2500, BH3500	CMR6A
	NB26, 27, 31, 50, 171, 211, 221, 223, 231, 251, 252, 253, 281, 321	BM7A
	NB-351, NB411, NBK411, NBT415	BPM7A
HONDA	NB30, NB60	B7HS
	UMK422, UMK431, UMR431	C5HSB
	UM21, UM2160, UM536/K1	BPR5ES
HUSQVARNA	UMK435 (04'), UMR435 (10'), UMR425 (07')	CMR5H
	16H, 18H, 24H, 26H, 26RJ, 120L, 132HBV, 225DR/RT, 232LR	BMR7A
MAKITA	RBC220, 221,230,251,260,261,520	BM7A
	RBC260, 261, 411	BPM7A
	RBK411	BPM7A
	RST250	BM7A
	SUM-321, 328,351	BM7A
	TBC-218, 262, 373, 422, 424, 425, 501	BM6A
	TBC-220, 224, 240, 250, 265	BPM6A
	TBC-264, 321, 322, 324, 325, 355	BM7A
	TBC-2000, 4000, 4500, 5000	BPM6A
	TST-218	BM6A
YAMAHA	YBC20D, 20S, 30D, 40D, 50D	BPM6A

CHAIN SAW

Brand	Model	NGK
DOLMAR	100,101,103,104,105,106, 108,112,152	BM6A
	110, 110i, 111, 112S, 113, 113S, 114, 115, 115i, 117, 118S, 119, 120, 120i	BPM7A
	120S, 121,122, 122S, 123,133, 133S, 143,153,160,166,309,310,343,308	BPM7A
	PS-6000I, 6000H, 6800i, 6800H, 9000, S6000	BPMR7A
	122SL, 128KMS4	BM7A
	309,343	BPM6A
	PS-33/340/400/401, PS410/33, PS411/33	BPMR6F
	HUSQVARNA	40P, 44, F70
HUSQVARNA	35, 36, 40, 41	BMR7A
	B65, B77, F65, 40P, 61P, G65, K65, L65, L77, R65, 61P, 65, 65K, 778S	BPM6A
	162E/FE/FG, 163CD/S, 165R, 234SE/SG, 238SE/SG, 240S/SE/SG	BPM6A
	260CD, 263CD, 280CD/S/G, 266SE/SG/FE/FG, 268, 340SE, 340SG, 394	BPM6A
	340SE/SG, 344FE/FG, 389CD/K/S, 444FE/FG/SE/SG, 480CD/K	BPM6A
	285CD, 1100CD, 2100CD, 2100 CDW	BM7A
	A70, A77, A100, 2101CD, 133SF/SG, 154SE/SG, 180S, 181SE/SG/CD	BM7A

CHAIN SAW

Brand	Model	NGK
HUSQVARNA	36, 40, 41, 42, 45, 51, 55, 140R/S, 160S, 162S, 181, 281, 288	BPM7A
	RANCHER 40, 50, 61	BPMR6A
KIORITZ (ECHO)	CS-100	B-7S
	CS-60S, CS-30EVL, CS-200E, CS-280EG/EVL, CS-285EVL, CS-290EVL	BM6A
	CS-302/S, CS-304VL, CS-315, CS-320EVL, CS-330EVL, CS-351VL	BM6A
	CS-451VL, CS-452VL, CS-600, CS-601/S/SVUEVL, CS-701VUSVL	BM6A
	CS-1001VL, CSB452VL, CSB-280/E, 330EVL, SB452VL	BPM7A
	CS-280E, CS-300EVL, CS-360EVL, CS-400EVL, CS-500VL/EVL	BPM6A
	CS-3900, CSB-360EVL, 400EVL	BPM6A
	CS-332/EV, CS-440EVL, CS-510EVL, 550EVL, CS-602VL, CS650EVL	BPM7A
	CS-660EVL, CS-702VL/EVL, CS-750VL/EVL, CS-900EVL, CS-1200	BPM7A
	CS-2800, 2900, 3000, 3400, 3600, 4000, 400, 4500/P, 4600, 4601, 5500	BPM7A
	CS-5501, 6700, 6701, 8000, 8000P	BPM7A
	CSB-440EVL, 550EVL, 650EVL, 660EVL, 750EVL, 2800, 2900	BPM7A
CSO-1200, CST-600EVL, CST601EVL, SRM2001S	BPM7A	
STIHL	06, 07, 07S, 08, FS353, TS350	BPR6HS
	009/AV, 010/AV, 011/AV, 015/AV, 017, 019T, 020AV/AVS, 024AV	BPMR7A
	028AV/AVS, 020T, 024WB, 026C, 028S, 023L, 044C, FS48, FS52, FS62	BPMR7A
	030AV, 031AV, 040AV, 042AV, 045AV, 050AV, 064, 070AV, 075AV	BPMR7A
	084, 090AV/N/S, 1106G/GS, 1601, BG60, FS20, FS50, FS65, FS80, FS90	BPMR7A
	032AV, 034AV, 038AV/AVS, 041AV, 046/C, 048AV, 051AV, 056AV/AVS	BPMR6A
	076AV, 088FR350, FR450, FS75, FS85, FS120, FS300, FS350, FS400/K	BPMR7A
	FS81, FS151, FS202, FS401, TS200, TS400, TS460, TS510	BPMR7A
	FS150, FS200, FS410	BPMR7A
	H60, S10, TS350AVE, TS360AVE, TS360S, TS760	BPMR7A
	HS61, HS72, HS74, HS76, HS151, HS202, HS242, HS246, SR400	BPMR7A
TANAKA	ECS-290, 300, 320, 330, 351, 355, 356, 357	BM6A
	ECS-370, 405, 415, 505, 506, 650, EHC-120	BM7A
	ECS-3500, 4000	BPM6A
	ECV-3400, 4000	BPM7A

LAWN MOVER

Brand	Model	NGK
HOMELITE	YARD TRAC	B-4
	M26	B7S
HONDA	GVX120, H3001, H3009, H3011H, H3013H, H4013	BP5ES
	UM21, 24, 28, 2160, 2460, 536/K/K2/K3, 616/K1/K2/K3	BP5ES
HUSQVARNA	MK500, MK500 (Auto), Royal 820-8	BM6A
	Rider 1000-14, 1200-18	BP5ES
	Royal 48SEK/SK, 53SEK	BP6ES
KYMCO	MF 32AA, MF 40AA	BP5ES
McCULLOCH	300, 500, 700	B6S
REMINGTON	All Model	BM6A



LAWN MOVER

Brand	Model	NGK
SOLO	102, 103, 106, 107, 110, 000	BM7A
	520, 549, 554, 554L, 563, 563L, Profi 549	B6HS
STIHL	522, 543, 543L, 57 583	B5HS
	FS36, FS44	BM6A
	FS74, FS86, FS229, FS280, FS420	BM7A
YAMAHA	YB20S / 20D / 30D / 40D / 50D	BM6A
	YLM-Series 342, 346, YT3600	BR4ES
	YLM-Series 446, 553, 653	BP5ES
	YT2300	BCPR5ES
	YT6800	BPR5HS

PUMP ENGINE

Brand	Model	NGK
HONDA	WX10K1	CMR5H

TILLER

Brand	Model	NGK
HONDA	FG110/K1 (05')	CMR5H

POWER DUSTER

Brand	Model	NGK
FUJI ROBIN	NF302, 352, 351, 400, 411, 412, 600	BPM7A
	RS02RS,RS02B,RS232,RS233,RSB232	BM7A
	FH03, FH04, FH03-0A, FH04-03, PS04	B7HS
	RS03, 03-0A, 03-04, 04, 04-2A, 04-3, 301, 331, 350, 401, 412, 450	B7HS

GENERAL PURPOSE ENGINE

Brand	Model	NGK
HONDA	GX22, GX33, GX100, GX100U, GXH50, GXV50	CR5HSB
	GX25 (02'), GX25NT/T, GX35N/NT/T (05')	CMR5H
	GX120U	BPR4ES
	GXV160UA/H, GXV340UA/UH/UT, GXV390K/UA/UT, GXV520U, 530U, 610	BPR5ES
	GX110, GX120/U/UT, GX120, GX140, GX160H, GX160/UT	BPR6ES
	GX200, GX240, GX270OU	BPR6ES
	GX390U/UT, GX610/620 (98')	BPR6ES
	GX360	BPR4HS

Marine

JOHNSON
EVINRUDE
MERCURY
MARINE

SUZUKI
TANAKA
TOHATSU
YAMAHA

ENDURO MODEL
WATER VEHICLE



Brand	Model	NGK	
JOHNSON / EVINRUDE	2HP, 3.3HP, 90HP, 120HP, 225HP, 300HP	BPR6HS/BP6HS	
	4HP, 6HP, 8HP, 10HP, 14HP, 15HP	BR7HS/B7HS	
	25HP, 30HP, 70HP, 115HP, 150HP, 250HP	BR7HS/B7HS	
	140HP	BU8H	
MERCURY	2 STROKE		
	2.2HP, 2.5HP, 3HP, 3.3HP, 3.5HP (90'-94')	BP6HS-10	
	3.6HP, 4HP, 5HP, BHP, 9HP, 9.9HP (86'-88')	B7HS-10	
	15HP Sea Pro (96')	BPSHS-10	
	25HP, 30HP, 40HP Sea Pro	BP8H-N-10	
	25HP XD, 35HP, 40HP Sea Pro (83'-90')	BUHW	
	4 STROKE		
	4HP, 5HP, 6HP DCPR6EA	DCPR6EA	
	9.9HP, 15HP, 25HP, 30HP, 40HP, 50HP, 60HP	DPR6EA-9	
	75HP, 90HP, 115HP (EFI)	LFR5A-11	
	115HP, 135HP, 150HP, 200HP, 225HP (Opti Max)	PZFR5F-11	
	200HP, 225HP, 250HP, 275HP (Verado)	ILFR6G	
	MARINE	2 STROKE	
2HP (2A,2B), 6HP (6B)		B5HS	
2.5HP, 3.3HP		BP6HS-10	
3.5HP, 4HP, 5HP (5B, 5C), BHP (Marathon 8), SA		B7HS	
9.9HP (9C-882), 15HP (15A/15C), 20HP (20C), 25HP (694), 30HP (A,W)		B7HS	
4HP, 5HP (99')		BP7HS-10	
20HP, 40HP, 60HP, 70HP, 90HP, 140HP, 150HP, 175HP, 200HP		BUHW	
4 STROKE			
4HP, 5HP, 6HP		DCPR6E	
9.9HP, 15HP, 25HP, 30HP, 40HP, 45HP, 50HP		DCPR6E-9	
90HP, 115HP, 135HP, 150HP, 200HP, 225HP (Opti Max)		PZFR5F-11	
SUZUKI		2 STROKE	
		DT2, DT2.2, DT4	B5HS
	DT5, 5W, DT6, DT9.9K, 15K	B6HS-10	
	DT5Y, DT9.9, DT15, DT20, DT25, DT30	B7HS-10	
	DT40, DT48, DT50,DT55, DT60, DT65, DT75, DT85, DT90,DT100, DT115	BSHS-10	
	DT100, DT115, DT140, DT150, DT175, DT200, DT225	BSHS-10	
	4 STROKE		
	DF9.9, DF15, DF25, DF30, DF40, DF50	DCPR6E	
	DF60, DF70	BP6ES	
	DF90, DF115	BKR6E	
	TANAKA	TOB-120, 175, 300	BMR6A
		TOB-550	BPR7HS
	TOHATSU	M2.5A, M3.5A, M3.5B	BP6HS-10
M4C, 5B, M6B, M8B, M9.8B		BP7HS-10	
M9.8B/2, M15B2, M18C, M25C, M30A, M35B, M35C, M40D		B7HS-10	
M45A, M50C/D, M55A/B, M60A/B/C, M70A/B/C, M80A, M90A, M120A, M140A		B8HS-10	
4 STROKE			
MFS 4A/5A/6A, MFS 9.9A/B		DCPR6E	



Brand	Model	NGK	
YAMAHA	2B, 5D	B5HS	
	2C, 4A, 4AC, 4AS, 4B, 4BC, 5C, 5CS, 20C, 25D, 40J	BR7HS	
	6C, BC, 9.9F, 13.5NF, 15F, 20D, 25B, 25J25N, 25V, 30D, 40G/T/X, 150F	BR7HS-10	
	150L/J, L150A/F, 150G/T, L150J, D150N, V150T	BR7HS-10	
	3AS, 3A, 6D, F6/A/B, F8/C, FT8D, T8/E/P	BR6HS-10	
	25X, 30G, 30H, 400, 40Y, 50G/H/T, 55A/B/D, 60F/T, 70A/B/T/C, 75A/B/C	B7HS-10	
	80A, 85A, 90A/T, 100A, 115B/C/F/T, 150A, L150A, D150H, 155A, S175D, 175F	BR8HS-10	
	175D, 200A, L200A, 200F, L200F, S200F, SL200F, 200J, 225D, 250A/C, L250A	BR8HS-10	
	130B, L130B, 140B/C, L140C, 225C/G/F, L225C, L225F, 250A/B, L250A/B	BR9HS-10	
	250G, L250G (06')	BR8HS-10	
	Z150P, L150P, Z150Q (01')	BKR6ES-11	
	Z150P, LZ150P, Z150Q (02')	BKR6EKU	
	Z150T, LZ150T, V150T (06')	BKR6EKU	
	Z175G, Z175H, Z200N, LZ200N, Z200P (01')	BKR7ES-11	
	Z175G, Z175H (02'), LZ250D/F, Z250D (03')	BKR7EKU	
	Z175T, VZ175T, VZ200T, Z240B, Z250D/F/T, LZ250D/T, V250T, Z300A/B/T (06')	BKR6EKU	
	Z200P, Z225H (02'), Z250D/F, LZ250D (03'), VZ250T, Z250D/F/T, LZ300A(06')	BKR6EKU	
	ENDURO MODEL	E8D, E9.9C/H, E15C, E25A/B, E40X (20')	B7HS-10
		E9.9D, E15D, E25H	B8HS-10 / BR8HS-10
E40G, E40J, E40X (01'), E48		B7HS/ BR7HS	
E55C, E60, E60J, E65A, E75B, E115A		B8HS-10 / BR8HS-10	
4 STROKE			
F2A, F2.5A, F4A		B6HS/ BR6HS	
F6A, F6B, F8C, FT8D		BR6HS-10	
F9.9A/B, FT9.9A, (F8B)		BR6HS-10	
F9.9C, F9.9D, F9.9ER2, F9.9MH2, T9.9ER2/EH2, T9.9P, FT9.9D, F13.5A		DPR6EA-9	
F15A/B/F/E/P, F20A, F25A/C, FT25B, T25T, E30A, F30E/T, F40A/B, F45A, F50A		DPR6EA-9	
F50B/D, FT50B/C		DPR6EA-9	
F40C, F40E/T, F60A, FT60B		DPR5EA-9	
F40D, F50F/T, FT50G, T505, F60C/T, FT60D		DPR6EB-9	
F9.9ER/EH, F9.9MH		CR6HSA	
F75A, F75B/T, F80A/B, F90A, F90B/T, F95A, F100A/B/C/D, F150T, LF150T		LFR5A-11	
F200A/B, FL200A/B, F200T, LF200T, F225NT, FL225A/T		LFR5A-11	
F115A/T, FL115A, LF115T, FL115A, F200C, FL200C, F250A/T, FL250A, LF250T		LFR6A-11	
WATER VEHICLE		GP760, GP1200, WB700, WR700	BR8HS
		GP800/R/X/A-B/A-C	BR8ES
	GP1200R, GP1300E/B/C, XLT 1200	BR8ES-11	
	WRA 700, WVT 700, WVTZ 760, WVT1100	BR8HS	
	SUV 1200, XL 700	BR8HS	
	GP 800, WB 800, XL 800	BR8HS	
	XA1200A-E/A-C, XL 1200LXRT1200-Z	BR8ES-11	
	SJ 700 SUPER JET(2001)	BR7HS	

How to correctly install spark plugs

1

Pay adequate attention while installing the spark plug. Especially, excessive or even inadequate tightening torque can damage to the spark plug or the engine. Therefore, follow the instructions given below.



Select the correct plug wrench.

Depending on engine, the plug hole may be small, the plug wrench may not fit in the hexagonal part of the plug, and it may not be possible to tightly fasten the spark plug. Use a plug wrench that is suitable for the vehicle (engine).



Install the spark plug with the correct tightening torque.

First screw in the spark plug by hand. Once the gasket contacts the cylinder head, then use a torque wrench to tighten the spark plug to the standard torque, shown in the plug with fingertips and when the gasket contacts the cylinder head, tighten the spark plug using a plug wrench, at a tightening angle (corresponding to the standard tightening torque shown in the table on the right) mentioned below.

Standard Tightening Torque

Diameter of Plug Thread	Tightening Torque
φ18mm	35~40N·m (3.5~4.0kgm)
φ14mm	25~30N·m (2.5~3.0kgm)
φ12mm	15~20N·m (1.5~2.0kgm)
φ10mm	10~12N·m (1.0~1.2kgm)
φ8mm	8~10N·m (0.8~1.0kgm)

Tapered Seat Type (Plug without gasket)

Tightening Torque
10~20N·m (1.0~2.0kgm)



Attention

▶ If a lubricant such as grease or a seizure-preventing agent is applied to the thread part; it may result in over-tightening of the spark plug even if is tightened as per the standard tightening torque. Do not use a lubricant and a seizure-preventing agent.

Tightening angle

Diameter of Plug Thread				New gasket	Used gasket	
φ18mm/φ14mm (Excluding ▼ part numbers)				Approximately 1/2~2/3 turn (180°~240°)	Approximately 1/12 turn (30°)	
▼	BCPR◊ED BCPR◊EDIX BCPR◊EKD BCPR◊EKD BKR◊E-9S BKR◊EIX-PS BKR◊EIX-11PS BKR◊EKE	BKR◊EKUC BKR◊EKUD BKR◊ERX-PS BKR◊ETUA HB◊AIX-11P HB◊BIX-11P IFR◊C-S IFR◊G-11KS	IZFR◊B IZFR◊C IZFR◊K11NS IZFR◊K-11S LZFR◊AP11GS LZFR◊AT-S PFR◊G-11S PZFR◊C	R6469-◊ ZFR◊K-11S ZFR◊KIX-11PS	Approximately 1/3 turn (120°)	Approximately 1/12 turn (30°)
φ12mm (Excluding ▼ part numbers)				Approximately 1/2 turn (180°)	Approximately 1/12 turn (30°)	
▼	DILKAR◊G11GS DILZKAR◊C11S DILZKAR◊A11GS DILZKAR◊B11GS ILKAR◊K11S ILZKAR◊E11S	ILZKAR◊F8S ILZKAR◊H8S ILZKAR◊B8S ILZKAR◊B11GS ILZKAR◊B-11S LKAR◊AP7JDS	R2556B-◊ R2556G-◊ R2558A-◊ R2558E-◊	SILKAR◊A-S SILZKAR◊F7S SILZKAR◊C11S	Approximately 1/4 turn (90°)	Approximately 1/8 turn (45°)
φ10mm (Excluding ▼ part numbers)				Approximately 1/2 turn (180°)	Approximately 1/12 turn (30°)	
▼ 1	C◊E CPR◊E CPR◊EA-9 CPR◊EAIX-9 CPR◊EB-9 C◊E C◊EB C◊EIA-9 C◊EIA-10 C◊EIB-9	CR◊EIB-10 CR◊EIX CR◊EK CR◊EKB CR◊EKC CR◊EKPA DIMR◊A10 ILMAR◊A8 LMAR◊A-9 LMAR◊AI-8	LMAR◊AI-10 LMAR◊AP8J LMAR◊BI-9 LMAR◊C-9 LMAR◊CI-8 LMAR◊D-J LMAR◊E-J LMAR◊G MAR◊A-J MR◊C-9N	MRC◊I-8 MRC◊E-9 MRC◊F PMR◊A PMR◊B SILMAR◊B9 SILMFR◊A8G SIMR◊A9	Approximately 1/4 turn (90°)	Approximately 1/12 turn (30°)
▼ 2	CPR◊EA-9S CPR◊EAIX-9S CR◊EH-9S IMR◊C-9HES IMR◊D-9H IMR◊E-9HES	LMAR◊A-9S LMAR◊AP8JS MAR◊B-JDS MR◊AP8HJS R0409B-◊ R0451B-◊	R0465B-◊ SILMAR◊A9S SILR◊A7S SPMR◊A6HDG		Approximately 1/6 turn (60°)	Approximately 1/12 turn (30°)
φ8mm				Approximately 1/3 turn (120°)	Approximately 1/12 turn (30°)	
Tapered Seat Type (Plug without gasket)				Approximately 1/16 turn (22.5°)	Approximately 1/16 turn (22.5°)	
Copper Gasket Type				Approximately 1/12 turn (30°)	Approximately 1/24 turn (15°)	

※ Heat rating is put in ◊.

How to correctly install spark plugs ②

※ For ▼ part numbers, refer to the table "Tightening Angle" on the previous page.

For plugs with gaskets wherein the thread diameter is \varnothing 18 mm or \varnothing 14 mm

New gasket (Excluding ▼ part numbers)
1/2~2/3 turn (180°~240°)

Re-used gasket (Excluding part ▼ numbers)
1/12 turn (30°)

For the part ▼ numbers	
New gasket	Re-used gasket
1/3 turn (120°)	1/12 turn (30°)

For plugs with gaskets wherein the thread diameter is \varnothing 12 mm

New gasket (Excluding ▼ part numbers)
1/2 turn (180°)

Re-used gasket (Excluding part ▼ numbers)
1/12 turn (30°)

For the part ▼ numbers	
New gasket	Re-used gasket
1/3 turn (120°)	1/12 turn (30°)

For plugs with gaskets wherein the thread diameter is \varnothing 10 mm

New gasket (Excluding ▼ part numbers)
1/2 turn (180°)

Re-used gasket (Excluding part ▼ numbers)
1/12 turn (30°)

For the part ▼ numbers	
New gasket	Re-used gasket
1/3 turn (120°)	1/12 turn (30°)

For plugs with gaskets wherein the thread diameter is \varnothing 8 mm

New gasket
1/3 turn (120°)

Re-used gasket
1/12 turn (30°)

For the part ▼ numbers	
New gasket	Re-used gasket
1/3 turn (120°)	1/12 turn (30°)

For a tapered seat-type spark plug without gasket

Both new and re-used gasket
1/16 turn (22.5°)

For a spark plug with copper gasket

New gasket
1/2 turn (30°)

Re-used gasket
1/24 turn (15°)

For Spark Plugs with gaskets wherein the thread diameter is \varnothing 10 mm (Long Thread Type)

New gasket
1/4 turn (90°)

Re-used 1/12 turn (30°)
(No change)

For the part ▼ numbers	
10 ~ 12N·m	(1.0 ~ 1.2 kgm)
(No change)	



Unit : mm

P		F				R		5		A		-11			
		Thread diameter	Thread length	Seat configuration	Hex size	Resistor		Heat rating				Spark gap			
DI	High ignitability plug : Double fine electrodes	F	Ø 14.0	19.0	Gasket	Hex 16.0	R	Resistor	2		A,B,C ...Suffix code		None	Motorcycle : 0.7~0.8 Car : 0.8~0.9	
I	Iridium spark plug	FE	Ø 14.0	19.0	Gasket	Hex 16.0			4				-7	0.7	
L	Long thread reach plug	G	Ø 14.0	19.0	Gasket	Hex 20.8			5				-9	0.9	
P	Platinum spark plug	J	Ø 12.0	19.0	Gasket	Hex 18.0			6				-10	1.0	
S	High ignitability plug : thin square tip type	K	Ø 12.0	19.0	Gasket	Hex 16.0			7			I	Single Iridium spark plug	-11	1.1
Z	Projected plug	KA	Ø 12.0	19.0	Gasket	Hex 14.0			8			IX	Iridium IX spark plug	-10	1.1
									9			P	Single Platinum spark plug	-13	1.3
									10					-15	1.5
Above alphabets are occasionally used in combination <Example>ILFR..., PLZFR....		KB	Ø 12.0	19.0	Gasket	Bi-Hex 14.0 (Bi-hexagonal *)									
When "L" is included, priority is given to "L (long reach)" in thread length. <Example> *Gasket type FR5AP-11 : Thread length 19.0mm ↓ LFR5AP-11 : Thread length 26.5mm *Tapered seat type PTR5C-13 : Thread length 17.5mm ↓ PLTR6A-10G : Thread length 25.0mm		KE	Ø 12.0	19.0	Gasket	Hex 16.0									
		KF	Ø 12.0	19.0	Gasket	Hex 14.0									
		KG	Ø 12.0	19.0	Gasket	Bi-Hex 14.0 (Bi-hexagonal *)									
		L	Ø 10.0	12.7	Gasket	Hex 16.0									
		M	Ø 10.0	19.0	Gasket	Hex 16.0									
		MA	Ø 10.0	19.0	Gasket	Hex 14.0									
		MF	Ø 10.0	19.0	Gasket	Hex 14.0									
		NA	Ø 12.0	17.5	Tapered seat	Hex 14.0									
		T	Ø 14.0	17.5	Tapered seat	Hex 16.0									
		U	Ø 14.0	11.2	Tapered seat	Hex 16.0									
		W	Ø 18.0	10.9	Tapered seat	Hex 20.8									
		X	Ø 14.0	9.5	Gasket	Hex 20.8									
		Y	Ø 14.0	11.2	Tapered seat	Hex 16.0									
		* Exception TR5A-10, TR5A-13, TR5B-13, TR6B-10, TR6B-13, PTR5A-10, PTR5A-13 : Thread length 25.0mm													
		* Bi-hexagonal socket is necessary.													
		* FE, KE, KF, KG, MF : Longer exposed insulator length type													

Unit : mm

HB		6		A		IX		-11		P			
		Heat rating		Thread diameter	Thread length	Seat configuration	Hex size			Spark gap			
HB	HYBD (3-ground-electrode hybrid type)	4		A	Ø 14.0	20.5	Gasket	Hex 16.0	IX		-8	0.8	
		5			B	Ø 14.0	19.0	Gasket	Hex 16.0			-9	0.9
		6										-10	1.0
		7										-11	1.1
		8										-13	1.3

Unit : mm

DF		6		H		-11		A					
		Heat rating		Thread diameter	Thread length	Seat configuration	Hex size	Spark gap					
DF	High ignitability plug (Double fine electrodes)	4		A	Ø 14.0	19.0	Gasket	Hex 16.0	-8	0.8	A,B,C...Suffix code		
DFH	High ignitability plug (DF + Hybrid type)	5			B	Ø 14.0	26.5	Gasket	Hex 16.0	-9		0.9	
		6			H	Ø 12.0	26.5	Gasket	Hex 14.0	-10		1.0	
		7			*DF6H-11A : Thread length 28.0mm							-11	1.1
		8											-13
		9										-15	1.5

NTK SENSORS

Oxygen Sensors



HONDA
PERODUA
PROTON

TECHNOLOGY FOR THE CLEAN AIR



Brand	Model	Oxygen Sensor P/N	Front	Rear
HONDA	Honda Accord 1.5T	UAA3005-HG002	O	
	Honda Accord 1.5T	AZA0001-HG014		O
	Honda CRV (TLAX) 2.0	OZA719-HG4/11		O
	Honda CRV (TLAX) 1.5T	UAA3001-HG002/12	O	
	Honda Civic (TEAT) 1.8 (FC)	OZA719-HG3/07		O
	Honda City (T9AW) (non Hybrid)	OZA776-HG1/06		O
	Honda Jazz (T5AV 21'M) (non Hybrid)	OZA776-HG1/06		O
	Honda BRV (TSAX)	OZA776-HG2/06		O
	Honda HRV (T7AW) (non Hybrid)	OZA719-HG3		O
	Honda City(T00A) (Sedan + Hatchback)	AZA0001-HG002/06		O
	Honda City(T00A) (Sedan + Hatchback)	UAA3001-HG010/09	O	
	Honda City(T00A) (Hybrid Sedan + Hatchback)	UAA3001-HG010/09	O	
	Honda City(T00A) (Hybrid Sedan + Hatchback)	AZA0001-HG026/03		O
	Honda Civic(T20A- New) 1.5T	AZA0001-HG031/08		O
	Honda Civic(T20A- New) 1.5T	UAA3005-HG002/11	O	
	Honda Civic(T20A- New) 2.0 Hybrid	UAA3015-HG001/04	O	
	Honda Civic(T20A- New) 2.0 Hybrid	AZA0002-HG001/04		O
	Honda HRV(3M0AF) 1.5 NA	AZA0001-HG033/04		O
	Honda HRV(3M0AF) 1.5 NA	UAA3001-HG010/09	O	
	Honda HRV(3M0AF) 1.5T	AZA0001-HG041/07		O
	Honda HRV(3M0AF) 1.5T	UAA3005-HG003/04	O	
	Honda HRV(3M0AF) 1.5 Hybrid	AZA0001-HG035/03		O
	Honda HRV(3M0AF) 1.5 Hybrid	UAA3001-HG010/09	O	
	Honda CRV(3AOA) 1.5T	AZA0001-HG031/08		O
	Honda CRV(3AOA) 1.5T	UAA3005-HG002/11	O	
	Honda CRV(3AOA) 2.0 Hybrid	UAA3015-HG001/04	O	
	Honda CRV(3AOA) 2.0 Hybrid	AZA0002-HG001/04		O
	Honda BRV(3K6A (E LESS, E, V, RS)	AZA0001-HG002/06		O
	Honda BRV(3K6A (E LESS, E, V, RS)	UAA3001-HG010/09	O	
	PROTON	Proton Exora(IAFM+)	OZA603-SZ1	O
Proton Exora(CFE)		OZA603-SZ2	O	
Proton Gen2(Campro)		OZA334-MP1	O	
Proton Gen2(CPS)		OZA334-SZ9	O	
Proton Perdana(Pro-Hon 2HA) 2.0		OZA635-H1		O
Proton Perdana(Pro-Hon 2HA) 2.4		OZA644-HG29		O
Proton Persona(IAFM)		OZA334-SZ9	O	
Proton Preve(IAFM+)		OZA603-SZ1	O	
Proton Preve(CFE)		OZA603-SZ2	O	
Proton Saga BLM(IAFM)		OZA334-SZ9	O	
Proton Saga FL(IAFM)		OZA334-SZ9	O	
Proton Saga FLX(IAFM+) 1.3, 1.6		OZA603-SZ1	O	
Proton Satria Neo(Campro) 1.3, 1.6		OZA334-MP1	O	
Proton Satria Neo(CPS) 1.6		OZA334-SZ9	O	
Proton Suprima S		OZA603-SZ2	O	
Proton Waja(CPS)		OZA334-SZ9	O	
Proton Waja(Campro)		OZA334-MP1	O	

Ignition Coils



U4014



U5158



U5162



U5027



U5043



U5412



U5470



U5471



U5472

**THE
NGK
IGNITION
COILS
TESTED FOR
ENDURANCE**



YS KHONG
Malaysia Former Race Track Superstar



Part Number	OE Part No.	Applicable Model
U4014	MD362903	Proton Waja (4G18)
U5027	90919-T2003 / 90919-02240	Toyota Vios '04 - '16 (NCP42, NCP93, NCP150)
		Toyota Yaris (NCP91)
		Toyota Prius C
U5029	90919-02239	Toyota Wish ZNE1#
		Toyota Corolla Altis ZZE 2#
		Toyota Altezza GXE1#
		Toyota Caldina ZZT#
		Toyota Rav 4 ACA2#
U5043	22448-CJ00A / 22448-ED800	Nissan Grand Livina
		Nissan Latio
		Nissan Slyphy
		Nissan Teana 2.0
U5052	90919-02244	Toyota Camry ACV3#
		Toyota Estima ACR3# 5#
		Toyota Vellfire ANH2#
U5081	30520-RNA-A01	Honda Civic 1.8 FD SNA
		Honda Accord TAO 2.0
		Honda CRV 07-13
		Honda Stream 2.0 06-13
U5097	30520-PWA-003	Honda Jazz SAA 02-07 IDSi FRONT
		Honda City SEL 03-07 IDSi FRONT
U5098	30521-PWA-003	Honda Jazz SAA 02-07 IDSi REAR
		Honda City SEL 03-07 IDSi REAR
U5158	90048-52126	Perodua Kenari
		Perodua Kelisa
		Perodua Viva
U5162	30520-PWC-003	Honda Jazz '05 - '09 (SAA - VTEC)
		Honda City '03 - '08 (SEL - VTEC)
U5166	90919-02248	Toyota Camry ACV4#
		Toyota Innova TGN40
U5177	90919-02258	Toyota Corolla Altis ZRE14#, ZRE17#
		Toyota Wish ZGE2#
		Toyota Harrier Hybrid AVU
		Lexus CT200H
U5269	30520-R1A-A01	Honda HRV 1.8
		Honda Civic FB 1.8 TRO
		Honda Civic FC 1.8
U5412	30520-55A-005	Honda City '14 - '20 (T9A)
		Honda Jazz '14 - '20 (T5A)
		Honda BRV
U5470	19070-BZ040	Perodua Myvi '05 - '17
		Perodua Alza '09 - '22
		Toyota Avanza '07 - '11
		Toyota Rush '07 - '16



Part Number	OE Part No.	Applicable Model
U5471	PW812018	Proton Saga BLM
		Proton Persona
		Proton Waja (Campro IAFM)
		Proton Exora (Campro IAFM)
		Proton Preve (Campro IAFM)
U5472	PW911283 / PW812712	Proton Iriz
		Proton Persona VVT
		Proton Saga VVT
		Proton Exora Turbo
		Proton Preve Turbo
U5510	9004A-19001	Perodua Axia
		Perodua Bezza 1.0
U5099	30520-PNA-007	Honda Accord SDA 2.0 / 2.4 '03 - '07
		Honda CRV S9A '02 - '07
		Honda Civic '02 - '07
U5277	30520-5A2-A01	Honda Accord T2A 2.4 '14 - '19
U4062	90048-52130	Peodua Kembara 1.3 DVVT
U5167	30520-RB0-003	Honda City iVTEC TMO '09 - '13
		Honda CRZ
		Honda Jazz GE iVTEC '07 - '13
U5267	30521-RBJ-003	Honda Insight (Rear)
		Honda CRZ (Rear)
U5174	30520-R40-007	Honda Accord TAO 2.4 '08 - '13
U5487	90919-T2010 / 90919-T2011	Toyota Vios NSP151
		Toyota Yaris NSP151
		Toyota Sienta
		Perodua Bezza 1.3
		Perodua Myvi '18 - Present
U5400	30520-59B-013	Honda Civic FC 1.5T
U5280	22448-1KT0A	Nissan NV200
		Nissan Almera 1.5
		Nissan Serena 2.0
U5032	22448-4M500	Nissan Sentra N16
U5076	90919-02255	Toyota Alphard GGH2#, 3#
		Toyota Vellfire GGH2#, 3#
U5084	90919-02256	Toyota Camry AVV / ASV50 / ASV70
		Toyota Alphard AGH30
		Toyota Vellfire AGH30
U5279	PE201810	MAZDA 2 (Skyactiv)
		MAZDA 3 (Skyactiv)
		MAZDA 6 (Skyactiv)
		MAZDA CX-5 (Skyactiv)
U5311	1832A016	Proton Inspira
		Mitsubishi Lancer
		Mitsubishi ASX
		Mitsubishi Outlander

Philips Automotive Lighting



PremiumVision moto



PHILIPS

Philips Premium Vision
Philips Premium Vision moto
Philips Ultinon Essential moto LED
Philips Ultinon 1000 moto

Philips Premium Vision

H4

Range	Part No.	Volts	Watts	Base	Kelvin*	Pack	QTY
STANDARD	12342C1	12V	60/55W	P43t-38	3200K	Box	1
PREMIUM VISION	12343PRC1	12V	60/55W	P43t-38	3200K	Box	1

H7

Range	Part No.	Volts	Watts	Base	Kelvin*	Pack	QTY
STANDARD	12972C1	12V	55W	PX26d	3200K	Box	1
PREMIUM VISION	12972PRC1	12V	55W	PX26d	3200K	Box	1

H11

Range	Part No.	Volts	Watts	Base	Kelvin*	Pack	QTY
STANDARD	12362C1	12V	55W	PGJ19-2	3200K	Box	1

Philips Premium Vision moto

HS1

Range	Part No.	Volts	Watts	Base	Kelvin*	Pack	QTY
PREMIUM VISION MOTO	12636C1	12V	35/35W	PX43t	3200K	Box	1

M5

Range	Part No.	Volts	Watts	Base	Kelvin*	Pack	QTY
PREMIUM VISION MOTO	12153C1	12V	35/35W	P15d-25-1	3200K	Box	1
	12163C1	12V	25/25W	P15d-25-1	3200K	Box	1

Philips Ultinon Essential moto LED

HS1

Range	Part No.	Volts	Watts	Base	Kelvin*	Pack	QTY
ULTINON ESSENTIAL MOTO LED	11636UEMX1	12V	6W	PX43t	6500K	Single	1

M5

Range	Part No.	Volts	Watts	Base	Kelvin*	Pack	QTY
ULTINON ESSENTIAL MOTO LED	11163UEMX1	12V	6W	P15d-25-1	6500K	Single	1

Philips Ultinon 1000 moto

LED-HL [~M5/T19]

Range	Part No.	Volts	Watts	Base	Kelvin*	Pack	QTY
ULTINON 1000 MOTO	LUM11163U1MX1	12V	4.5W	P15d-25-1	6000K	Box	1

LED-HL [~HS1]

Range	Part No.	Volts	Watts	Base	Kelvin*	Pack	QTY
ULTINON 1000 MOTO	LUM11636U1MX1/20	12V	6W	PX43t	6000K	Box	1

***Beyond ceramics,
eXceeding imagination.***

Niterra Malaysia Berhad

Formerly known as NGK Spark Plugs Malaysia Berhad

Registration No. 197301000679 (14214K)

Head Office

No.4586 Jalan Permatang Pauh,
13400 Butterworth, Penang, Malaysia.

☎ +604-332 7555 (Hunting)
☎ +604-331 5287 (Sales) / +604-333 4676 (Factory)
✉ inquiries@ngkmal.com.my

Branch Office

No. 18, Jalan 5/18A, Taman Mastiara, Jalan Ipoh,
51200 Kuala Lumpur, Malaysia.

☎ +603-6258 3843 / +603-6258 3258
☎ +603-6258 2658
✉ inquiries@ngkmal.com.my

www.ngk.com.my